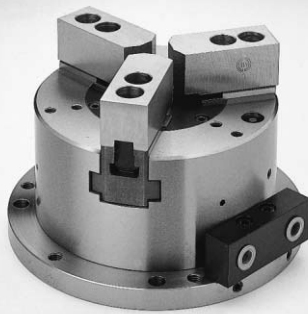


AS series

Work Gripper



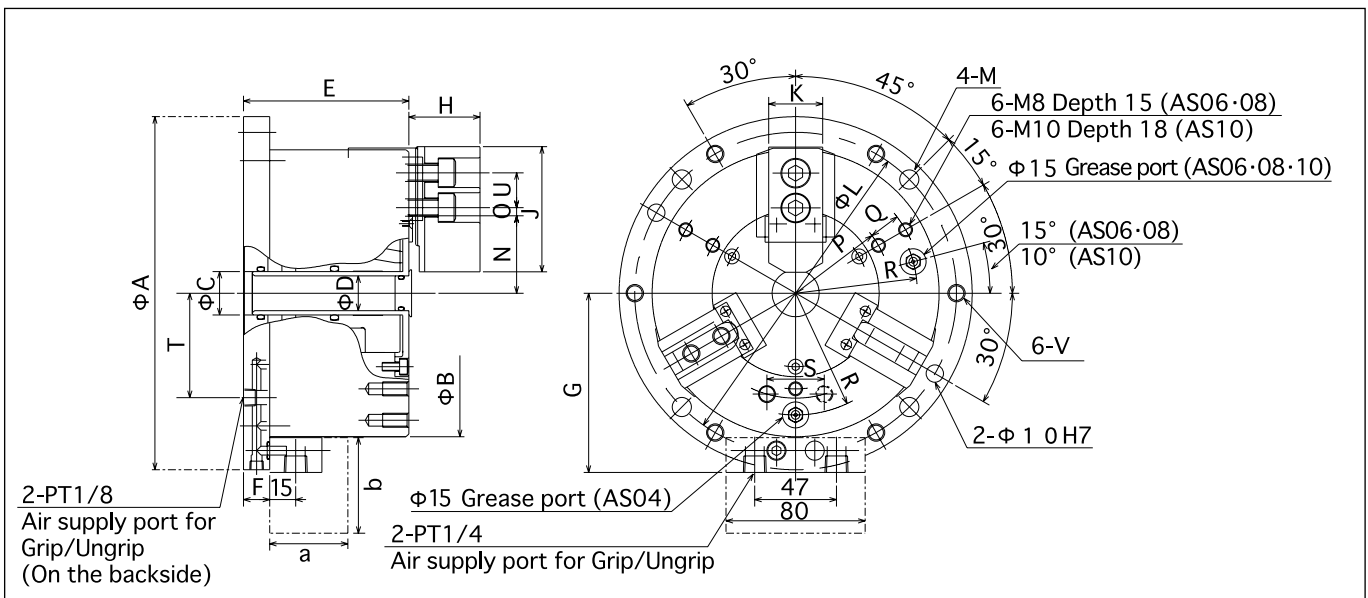
The work gripper can be used for a wide range of application in place of jig.

- The thin shape and lightweight design which built in air cylinder.
- Easy mounting because of only air piping.
- Hollow structure optimal for bar workpiece and air blow.
- Common use of green jaws with out power chuck is possible.
- Lock valve unit is provided so as to machine a required part even if any part is removed.

■ Specification table

TYPE	Jaw stroke (diameter) (mm)	Gripping force [Pneumatic at 0.6MPa (0.6kgf/cm ²)] KN (kgf)	Weight (kg)	Max. air pressure Mpa (kgf/cm ²)	Matching soft jaw	Gripping diameter (mm)	
						Max.	Min.
AS04	5.2	7.5 (765)	7.3	0.7 (7)	SB04B1	110	10
AS06	5.2	21 (2140)	16	0.7 (7)	SB06B1	165	23
AS08	6.3	33 (3365)	27.7	0.7 (7)	SB08B1	210	30
AS10	6.3	48 (4895)	42.5	0.7 (7)	SB10A1	254	50

■ Dimensional drawing



■ Dimensional table

TYPE	φA	φB	φC	φD	E	F	G	H	J	K	φL	φM	N _{max}	N _{min}	O _{max}	O _{min}	P	Q	R
AS04	148	110	20H7	—	90	15	75.5	27	55	23	130	9	25.5	22.9	9.75	6.75	-	-	43
AS06	203	165	25H7	20	95	15	103	36	72	31	185	11	44.5	41.9	9.25	4.75	55	18	70
AS08	248	210	36H7	30	106	15	125.5	42	95	35	230	11	53	49.85	14.75	8.75	68	25	90
AS10	300	254	50H7	43	110	16	147.5	46	110	40	280	13	66	62.85	16	8.5	85	30	110

TYPE	S	T	U	V	a	b
AS04	33	34	14	M8	45	55
AS06	33	60	20	M10	45	55
AS08	33	80	25	M10	45	55
AS10	33	95	30	M12	45	55

Note : The dimensions of a/b marked are the size of LV-3(Lock-valve).