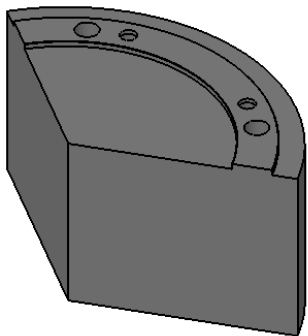
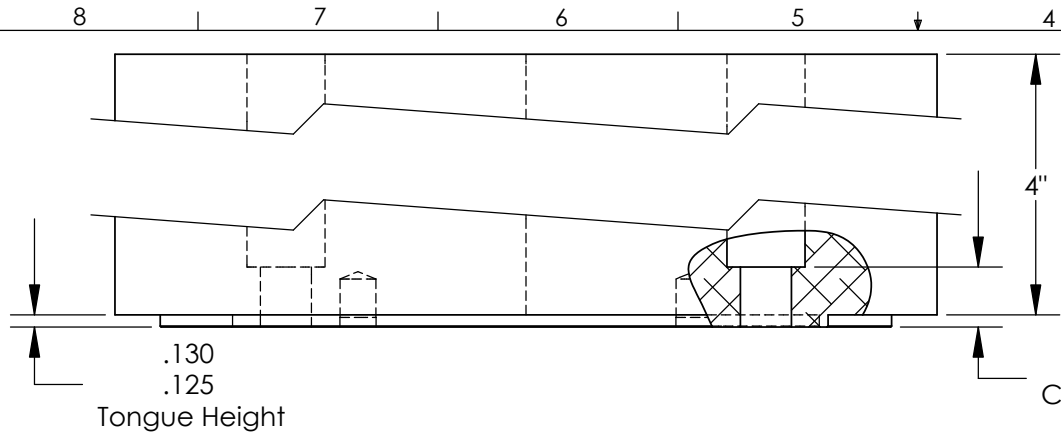


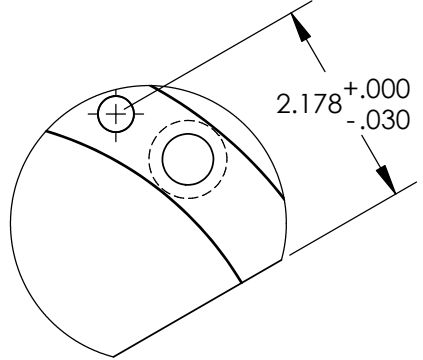
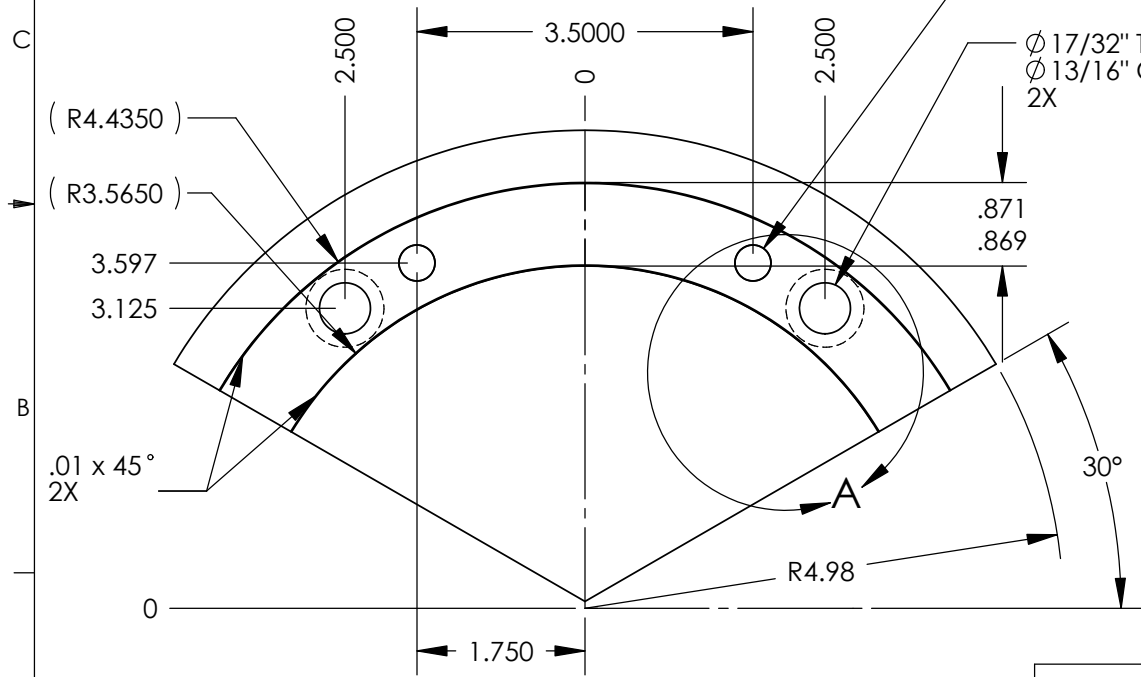
THE INFORMATION CONTAINED IN THIS DRAWING IS THE SOLE PROPERTY OF ABBOTT WORKHOLDING PRODUCTS. ANY REPRODUCTION IN PART OR WHOLE WITHOUT THE WRITTEN PERMISSION OF ABBOTT WORKHOLDING PRODUCTS IS PROHIBITED.



$\phi .3745 \times .50 \nabla$
 $.3740$

Ream $\phi .3755-.3765 \times .10 \nabla$
Install $3/8" \times 3/4"$ Dowel Pins
2X

$\phi 17/32"$ Thru
 $\phi 13/16"$ C'Bore
2X



DETAIL A

UNLESS OTHERWISE SPECIFIED
DIMENSIONS ARE IN INCHES
TOLERANCES ARE:
FRACTIONS DECIMALS ANGLES
 $\pm 1/32$.XX $\pm .015$ $\pm 5^\circ$
.XXX $\pm .005$
.XXXX $\pm .0005$

DRAWN TBJ	DATE 07/10/09
MATERIAL 6061	WEIGHT (POUNDS) 9.6
STYLE O	DISPOSITION Released

Abbott Workholding Products

430 McCall Road
Manhattan, KS 66502
785-776-8555
785-587-0004 Fax
800-528-6459

www.abbottworkholding.com
engineering@abbottworkholding.com

CUSTOMER: Stock	SIZE A	Part Name 10SP4M-P	REV. --
--------------------	-----------	-----------------------	------------