

THE INFORMATION CONTAINED IN THIS DRAWING IS THE SOLE PROPERTY OF ABBOTT WORKHOLDING PRODUCTS. ANY REPRODUCTION IN PART OR WHOLE WITHOUT THE WRITTEN PERMISSION OF ABBOTT WORKHOLDING PRODUCTS IS PROHIBITED.

.275  
.250  
TYP.  
Slot Depth

D

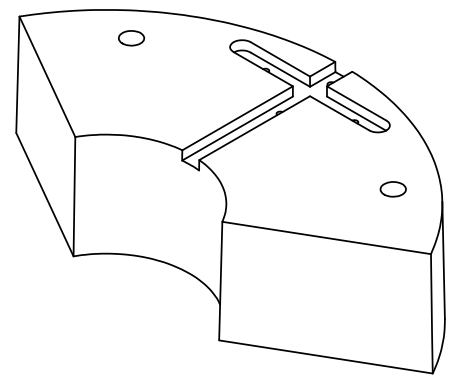
1°  
TYP.

Machined On Narrow  
Side of Draft

(12 1/8")

3"  
MIN

1"  
C'Bore Wall



D

Ø 17/32" Thru Holes  
Ø 15/16" C'Bore Holes  
2X

1.403  
TYP.

3.856  
TYP.

(6")

120°

R7"

R2 1/2"

Hole Pattern "K"

1.312  
TYP.

(1")

.503  
.501

.503  
.501

R1/4"  
TYP.

.875  
TYP.

4"

DETAIL A

10-32 x 1/2" ∇  
4X

C

B

UNLESS OTHERWISE SPECIFIED  
DIMENSIONS ARE IN INCHES  
TOLERANCES ARE:  
FRACTIONS DECIMALS ANGLES  
±1/32 .XX±.015 ±5°  
.XXX±.005  
.XXXX±.0005

**Abbott Workholding Products**

430 McCall Road  
Manhattan, KS 66502  
785-776-8555  
785-587-0004 Fax  
800-528-6459

www.abbottworkholding.com  
engineering@abbottworkholding.com

DRAWN Ahh	DATE 1/11/06
MATERIAL A319	WEIGHT(POUNDS) 13.4
STYLE O	DISPOSITION Released

CUSTOMER: Stock	SIZE A	Part Name 145SP3	REV. --
--------------------	-----------	---------------------	------------

A

8 7 6 5 4 3 2 1