

THE INFORMATION CONTAINED IN THIS DRAWING IS THE SOLE PROPERTY OF ABBOTT WORKHOLDING PRODUCTS. ANY REPRODUCTION IN PART OR WHOLE WITHOUT THE WRITTEN PERMISSION OF ABBOTT WORKHOLDING PRODUCTS IS PROHIBITED.

.275 TYP.  
.250  
Slot Depth

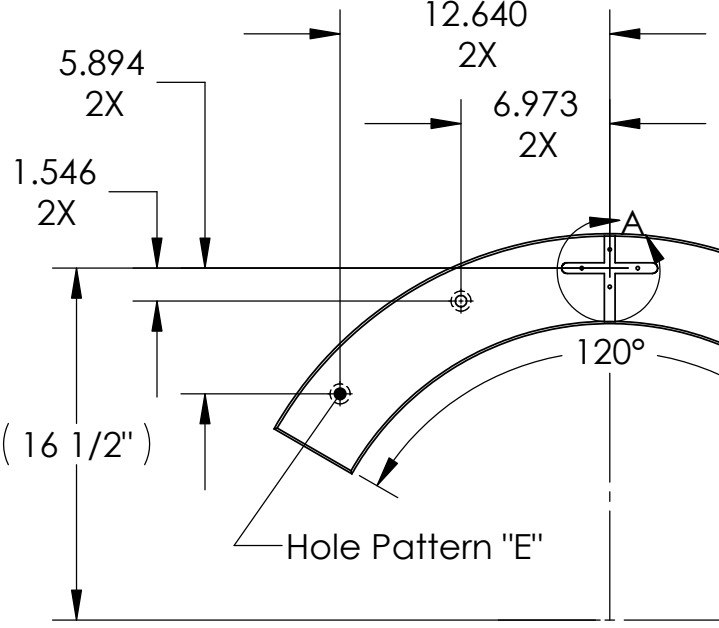
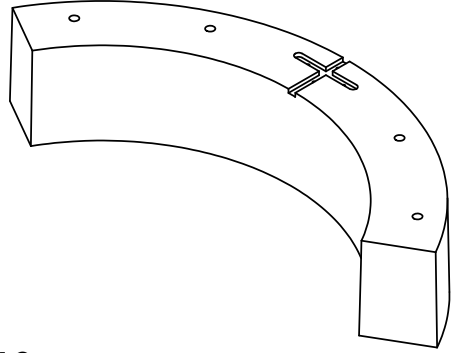
6" MIN

1° TYP.

Machined On Narrow Side of Draft

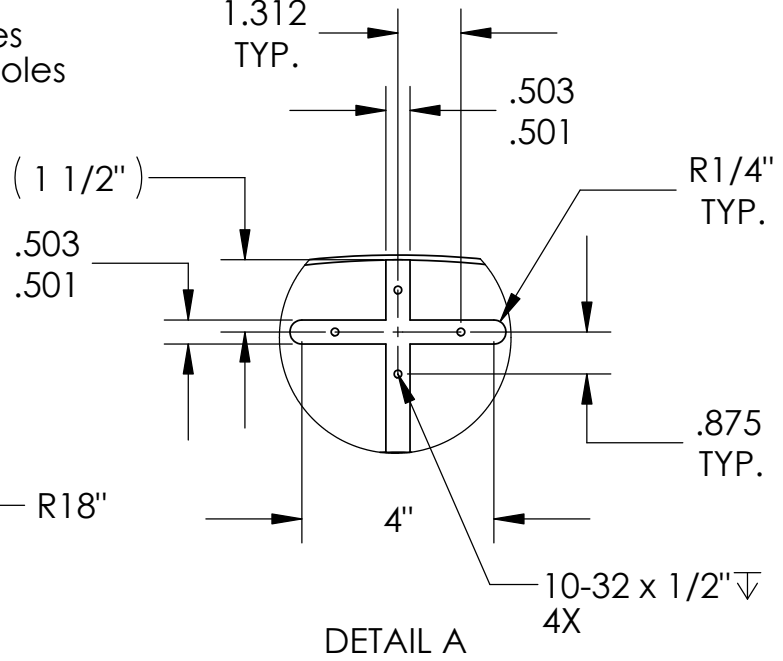
1" C'Bore Wall

(31 11/64")



Ø 17/32" Thru Holes  
Ø 15/16" C'Bore Holes  
4X

Hole Pattern "E"



UNLESS OTHERWISE SPECIFIED DIMENSIONS ARE IN INCHES	
TOLERANCES ARE:	
FRACTIONS	DECIMALS ANGLES
±1/32	.XX ± .015 ± 5°
	.XXX ± .005
	.XXXX ± .0005
DRAWN TBJ	DATE 02/11/04
MATERIAL A319	WEIGHT (POUNDS) 82.1
STYLE O	DISPOSITION Released

**Abbott Workholding Products**

430 McCall Road  
Manhattan, KS 66502  
785-776-8555  
785-587-0004 Fax  
800-528-6459  
www.abbottworkholding.com  
engineering@abbottworkholding.com

CUSTOMER: Stock	SIZE Part Name A 3628SP6	REV. --
--------------------	-----------------------------	------------