



CHUCK

Large Thru-Hole High Speed Power Chuck (Direct Mount) B-200A series

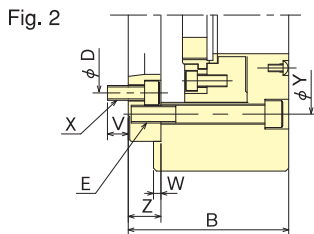
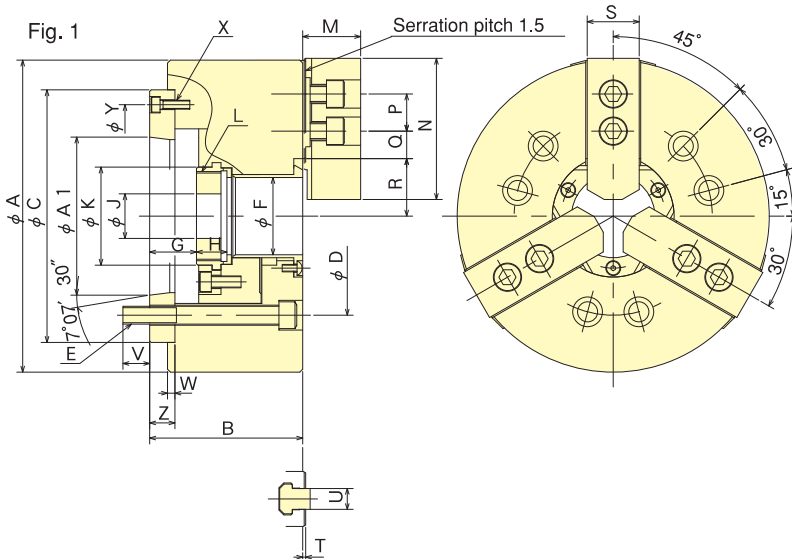
Equipped with Chuck Adaptor to suit Spindle Nose
Universally recognised standard chuck

* CE correspondence

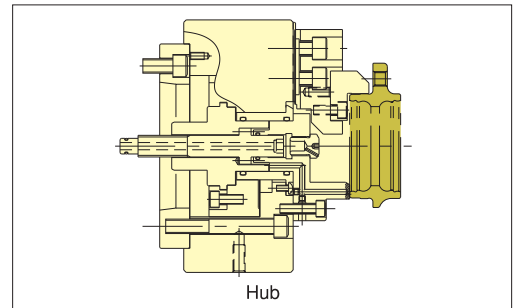


Standard Chuck

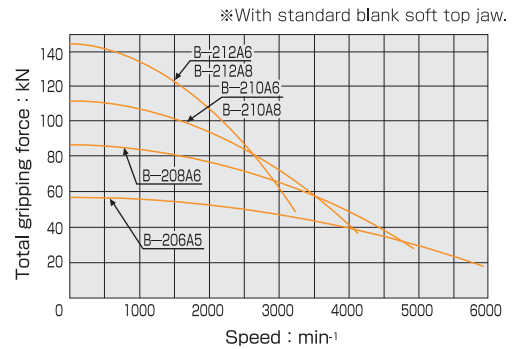
Dimensional Drawings



Gripping Example



Gripping Characteristic Graphs



Dimensions

※B-210A6, B-212A6 are referred to in Fig.2. ※Blank draw nut equipped.

Dimensions Model	A	B	C	D	E	F	G max.	G min.	H	J	K	L max.	M	N	P	Q max.	Q min.	R max.	R min.	S	T	U	V	W	X	Y	Z	A1
B-206A5	169	91	140	104.8	6-M10	45	26	14	19	20	60	M55×2.0	29	66	20	22.75	9.25	32	29.25	26	2	12	16	5	3-M 6	116	15	82.563
B-208A6	210	103	170	133.4	6-M12	52	31.5	15.5	20.5	30	66	M60×2.0	39	95	25	29.75	14.75	38.7	35	35	2	14	18	5	3-M 6	150	17	106.375
B-210A6	254	120	220	133.4	6-M16	75	33.5	14.5	25	45	94	M85×2.0	43	110	30	33.75	14.25	51	46.6	40	2	16	18.5	5	6-M12	171.4	25	106.375
B-210A8	254	113	220	171.4	6-M16	75	26.5	7.5	25	45	94	M85×2.0	43	110	30	33.75	14.25	51	46.6	40	2	16	24	5	3-M 8	190	18	139.719
B-212A6	304	129	220	133.4	6-M16	91	33	10	28	50	108	M90×2.0	51	111	30	45.75	15.75	61.3	56	50	2	21	18.5	6	6-M12	171.4	25	106.375
B-212A8	304	122	220	171.4	6-M16	91	26	3	28	50	108	M100×2.0	51	111	30	45.75	15.75	61.3	56	50	2	21	25	6	3-M 8	190	18	139.719

Specifications

※Max. speed is shown using actual test data.

Specifications Model	Thru-Hole mm	Gripping range mm Max.	Gripping range mm Min.	Jaw Stroke (diameter) mm	Plunger Stroke mm	Max. Draw Bar Pull Force kN (kgf)	Max. Gripping Force kN (kgf)	Max. Speed min ⁻¹	Net Weight with Soft top jaws kg	Moment of inertia kg·m ²	Matching Cylinder	Max. pressure MPa (kgf/cm ²)	Matching Hard top jaw	Matching Soft top jaw	Spindle nose size
B-206A5	45	169	16	5.5	12	22.0(2243)	57.0 (5812)	6000	13.7	0.063	S1246	2.80 (28.6)	HB06B1	SB06L1A	A2-5
B-208A6	52	210	13	7.4	16	34.8(3549)	86.0 (8769)	5000	23.6	0.178	S1552	2.65 (27.0)	HB08A1	SB08B1	A2-6
B-210A6	75	254	31	8.8	19	43.0(4385)	111.0 (11319)	4200	41.5	0.325	S1875	2.70 (27.5)	HB10A1	SB10B1	A2-6
B-210A8	75	254	31	8.8	19	43.0(4385)	111.0 (11319)	4200	40.0	0.323	S1875	2.70 (27.5)	HB10A1	SB10B1	A2-8
B-212A6	91	304	34	10.6	23	55.0(5608)	144.0 (14684)	3300	67.0	0.780	S2091	2.70 (27.5)	HB12N1	SB12N1	A2-6
B-212A8	91	304	34	10.6	23	55.0(5608)	144.0 (14684)	3300	64.0	0.765	S2091	2.70 (27.5)	HB12N1	SB12N1	A2-8