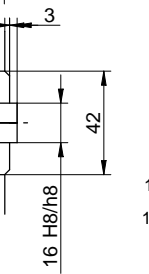


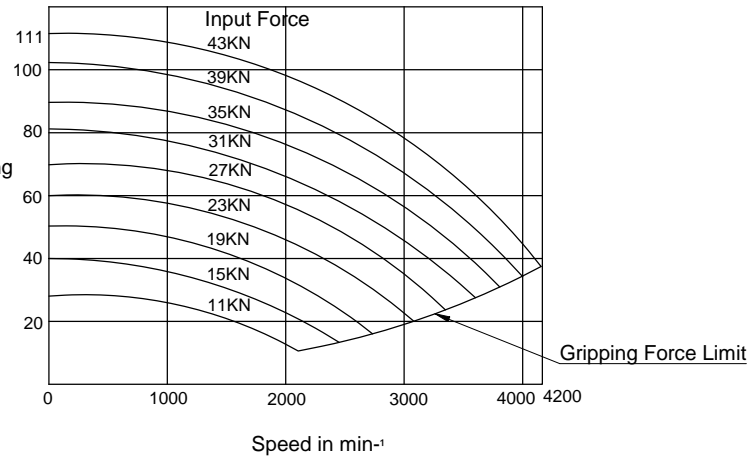
Specifications

SPINDLE NOSE SIZE	A2-6
THROUGH HOLE	75mm
MAX. GRIPPING RANGE	254mm
MIN. GRIPPING RANGE	31mm
JAW STROKE	8.8mm
PLUNGER STROKE	19mm
MAX. DRAW BAR PULL FORCE	43kN
MAX. GRIPPING FORCE	111kN
MAX. SPEED	4200min ⁻¹
TOTAL GRIPPING FORCE AT MAX. SPEED	37kN
NET WEIGHT WITH SOFT TOP JAWS	41.5kg
MOMENT OF INERTIA	0.325kg.m ²
MATCHING CYLINDER	S1875
MAX. PRESSURE	2.7MPa
MATCHING HARD TOP JAW	HB10A1
MATCHING SOFT TOP JAW	SB10B1/KSJ-210

Gripping Characteristic Graph For B-210A6



Total Gripping Force in KN



KITAGAWA EUROPE LIMITED
 TITLE : B210A6 POWER CHUCK
www.kitagawaeurope.com