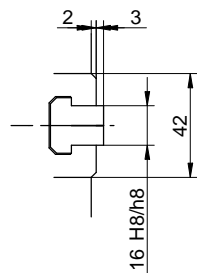


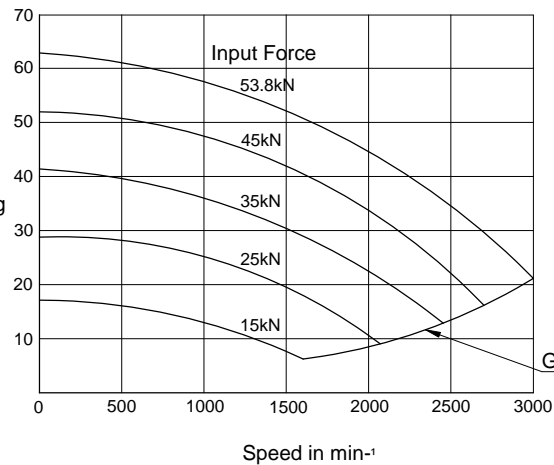
Specifications

SPINDLE NOSE SIZE	A2-6
THROUGH HOLE	53mm
MAX. GRIPPING RANGE	254mm
MIN. GRIPPING RANGE	42mm
JAW STROKE	30mm
PLUNGER STROKE	22mm
MAX. DRAW BAR PULL FORCE	53.8kN
MAX. GRIPPING FORCE	63.0kN
MAX. SPEED	3000min <sup>-1</sup>
TOTAL GRIPPING FORCE AT MAX. SPEED	21kN
NET WEIGHT WITH SOFT TOP JAWS	50.5kg
MOMENT OF INERTIA	0.351kg.m <sup>2</sup>
MATCHING CYLINDER	S1875
MAX. PRESSURE	3.20MPa
MATCHING HARD TOP JAW	HB10A1
MATCHING SOFT TOP JAW	SB10B1



Total Gripping Force in kN

Gripping Characteristic Graph For BL-210A6



KITAGAWA EUROPE LIMITED  
 TITLE : BL210A6 POWER CHUCK  
 www.kitagawaeurope.com