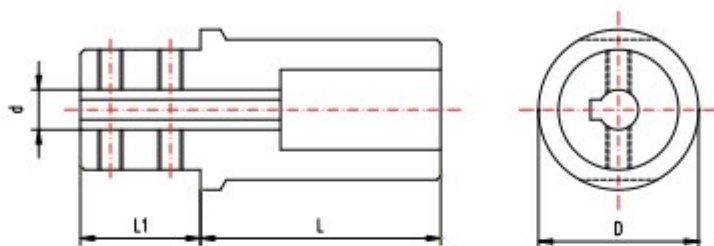


9.3 Bussole con passaggio del refrigerante

Bushes with flow of cooling liquid



D=25 mm.

ARTICOLO-ITEM	D h7	d H8	L	L1
BL 25-6	25	6	65	30
BL 25-8	25	8	65	30
BL 25-10	25	10	65	30
BL 25-12	25	12	65	30
BL 25-16	25	16	65	30

D=32 mm.

ARTICOLO-ITEM	D h7	d H8	L	L1
BL 32-6	32	6	65	30
BL 32-8	32	8	65	30
BL 32-10	32	10	65	30
BL 32-12	32	12	65	30
BL 32-14	32	14	65	30
BL 32-16	32	16	65	30
BL 32-18	32	18	65	30
BL 32-20	32	20	65	30

D=40 mm.

ARTICOLO-ITEM	D h7	d H8	L	L1
BL 40-6	40	6	65	30
BL 40-8	40	8	65	30
BL 40-10	40	10	65	30
BL 40-12	40	12	65	30
BL 40-14	40	14	65	30
BL 40-16	40	16	65	30
BL 40-18	40	18	65	30
BL 40-20	40	20	65	30
BL 40-25	40	25	65	30

D=50 mm.

ARTICOLO-ITEM	D h7	d H8	L	L1
BL 50-12	50	12	65	30
BL 50-14	50	14	65	30
BL 50-16	50	16	65	30
BL 50-18	50	18	65	30
BL 50-20	50	20	65	30
BL 50-25	50	25	65	30
BL 50-32	50	32	65	30