

9 Bussole di riduzione *Reduction bushes*



I Le bussole di riduzione con battuta consentono il fissaggio di barení o punte con codolo cilindrico o a cono morse su portautensili di macchine a controllo numerico.

La nostra produzione di bussole si articola su diversi tipi:

- > bussole cilindriche con fissaggio dell'utensile a mezzo di grani
- > bussole cilindriche asolate con fissaggio diretto dell'utensile
- > bussole coniche
- > bussole con passaggio del refrigerante
- > bussole elastiche
- > bussole elastiche per barre antivibranti

Per ogni tipo sono previste diverse misure formando cosí una gamma completa che può soddisfare le piú svariate esigenze.

GB *The reduction bushes with flanges allow boring bars or drills with a cylindrical shaft or clamp cone to be fixed to the tool holders of numerically controlled machine tools.*

Five different types of bushes are available:

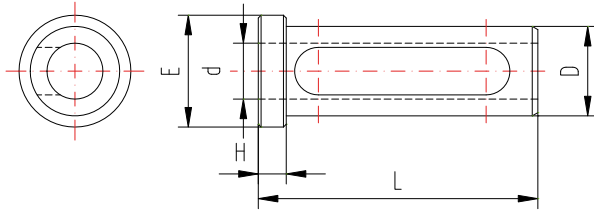
- > *Cylindrical bushes to be fixed to tool by means of screws*
- > *Cylindrical slotted bushes to be directly fastened to tool*
- > *Conical bushes*
- > *Bushes with flow of cooling liquid*
- > *Elastic bushes*
- > *Elastic bushes for vibration damper bar*

We manufacture each type of bush in different sizes, in order to offer a complete range capable of meeting every need.

9.1 Bussole cilindriche

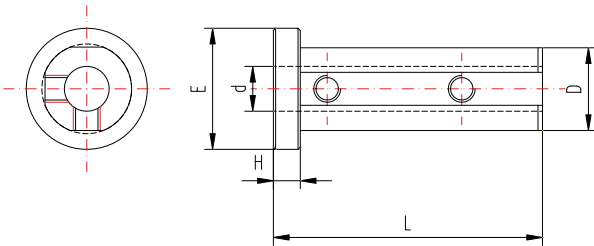
Cylindrical bushes

D=16 mm.

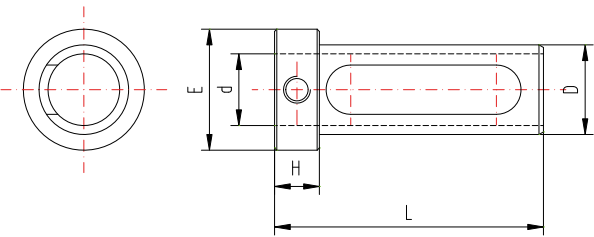


ARTICOLO-ITEM	D h7	d H8	L	H	E
B-16-6-50	16	6	50	5	20
B-16-8-50	16	8	50	5	20
B-16-10-50	16	10	50	5	20
B-16-12-50	16	12	50	5	20

D=19,5 mm. (3/4")

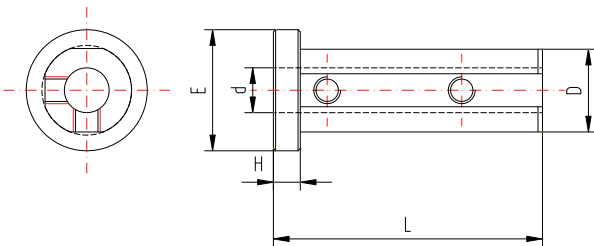


ARTICOLO-ITEM	D h7	d H8	L	H	E
B19,05-6-60	19,05	6	60	6	27
B19,05-8-60	19,05	8	60	6	27

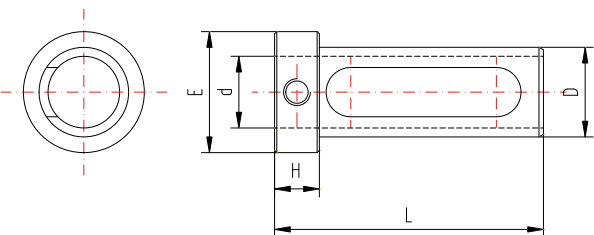


ARTICOLO-ITEM	D h7	d H8	L	H	E
B19,05-10-60	19,05	10	60	6	27
B19,05-12-60	19,05	12	60	10	27
B19,05-14-60	19,05	14	60	10	27
B19,05-16-60	19,05	16	60	10	27

D=20 mm.

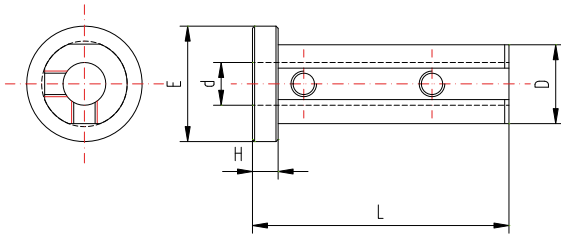


ARTICOLO-ITEM	D h7	d H8	L	H	E
B20-6-60	20	6	60	6	27
B20-8-60	20	8	60	6	27
B20-10-60	20	10	60	6	27

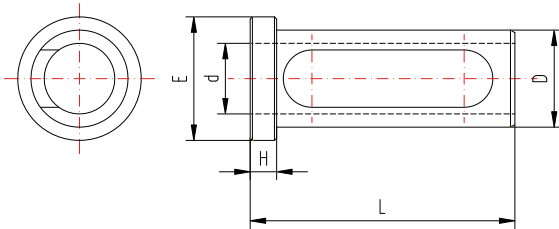


ARTICOLO-ITEM	D h7	d H8	L	H	E
B20-12-60	20	12	60	10	27
B20-14-60	20	14	60	10	27
B20-16-60	20	16	60	10	27

D=22 mm.

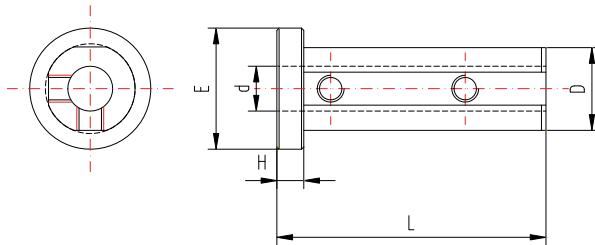


ARTICOLO-ITEM	D h7	d H8	L	H	E
B22-6-60	22	6	60	6	28
B22-8-60	22	8	60	6	28
B22-10-60	22	10	60	6	28

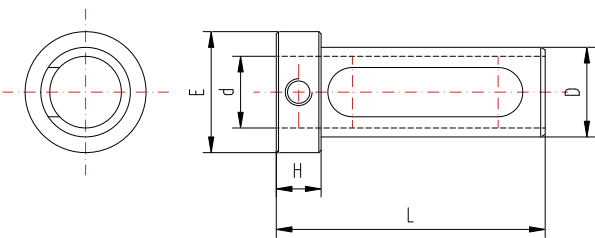


ARTICOLO-ITEM	D h7	d H8	L	H	E
B22-12-60	22	12	60	6	28
B22-14-60	22	14	60	6	28
B22-16-60	22	16	60	6	28

D=25 mm.

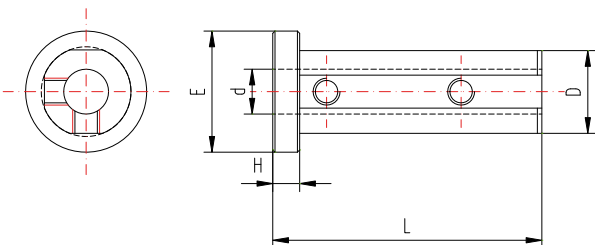


ARTICOLO-ITEM	D h7	d H8	L	H	E
B25-6-60	25	6	60	6	33
B25-8-60	25	8	60	6	33
B25-10-60	25	10	60	6	33
B25-12-60	25	12	60	6	33

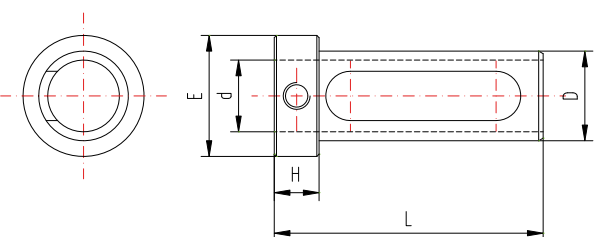


ARTICOLO-ITEM	D h7	d H8	L	H	E
B25-14-70	25	14	70	13	33
B25-16-70	25	16	70	13	33
B25-18-70	25	18	70	13	33
B25-20-70	25	20	70	13	33

D=25,40 mm. (1")

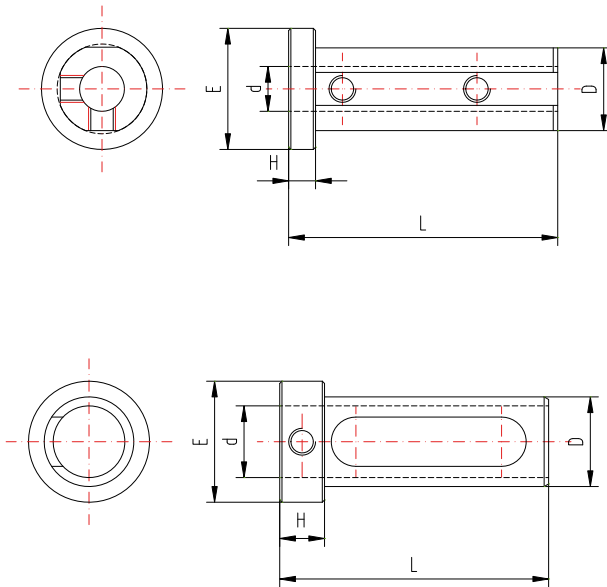


ARTICOLO-ITEM	D h7	d H8	L	H	E
B25,40-6-60	25,40	6	60	6	33
B25,40-8-60	25,40	8	60	6	33
B25,40-10-60	25,40	10	60	6	33
B25,40-12-60	25,40	12	60	6	33



ARTICOLO-ITEM	D h7	d H8	L	H	E
B25,40-12-70	25,40	12	70	13	33
B25,40-14-70	25,40	14	70	13	33
B25,40-16-70	25,40	16	70	13	33
B25,40-18-70	25,40	18	70	13	33
B25,40-20-70	25,40	20	70	13	33

D=31,75 mm. (1"1/4)

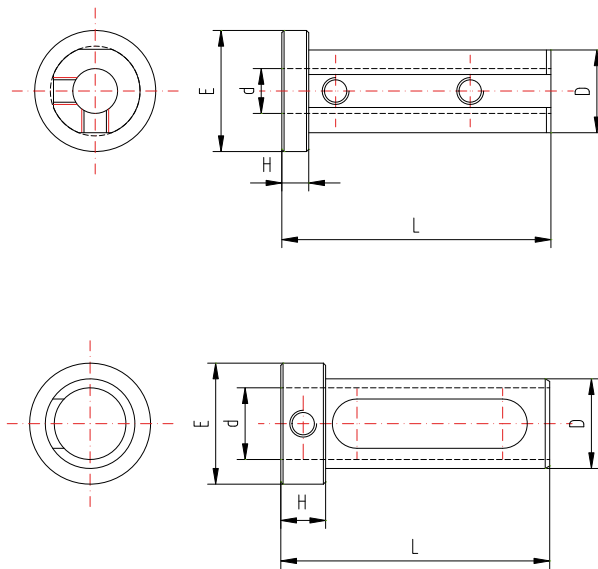


ARTICOLO-ITEM	D h7	d H8	L	H	E
B31,75-6-60	31,75	6	60	6	39

ARTICOLO-ITEM	D h7	d H7	L	H	E
B31,75-8-70	31,75	8	70	8	39
B31,75-10-70	31,75	10	70	8	39
B31,75-12-70	31,75	12	70	8	39
B31,75-14-70	31,75	14	70	8	39
B31,75-16-70	31,75	16	70	8	39
B31,75-18-70	31,75	18	70	8	39
B31,75-20-70	31,75	20	70	8	39

ARTICOLO-ITEM	D h7	d H7	L	H	E
B31,75-25-80	31,75	25	80	15	39

D=32 mm.

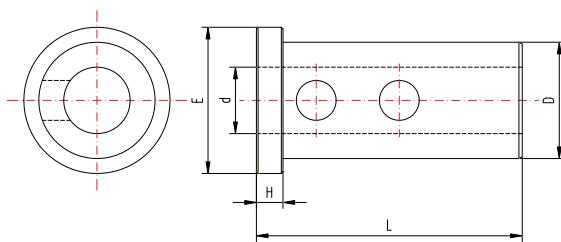


ARTICOLO-ITEM	D h7	d H8	L	H	E
B32-6-60	32	6	60	6	39

ARTICOLO-ITEM	D h7	d H8	L	H	E
B32-8-70	32	8	70	8	39
B32-10-70	32	10	70	8	39
B32-12-70	32	12	70	8	39
B32-14-70	32	14	70	8	39
B32-16-70	32	16	70	8	39
B32-18-70	32	18	70	8	39
B32-20-70	32	20	70	8	39

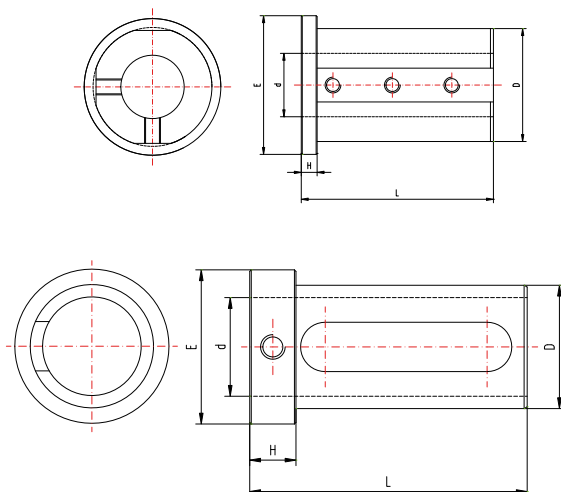
ARTICOLO-ITEM	D h7	d H7	L	H	E
B32-25-80	32	25	80	15	39

D=35 mm.



ARTICOLO-ITEM	D h7	d H8	L	H	E
B35-8-80	35	8	80	8	44
B35-10-80	35	10	80	8	44
B35-12-80	35	12	80	8	44
B35-16-80	35	16	80	8	44
B35-20-80	35	20	80	8	44
B35-25-80	35	25	80	8	44
B35-32-80	35	32	80	8	44

D=40 mm.

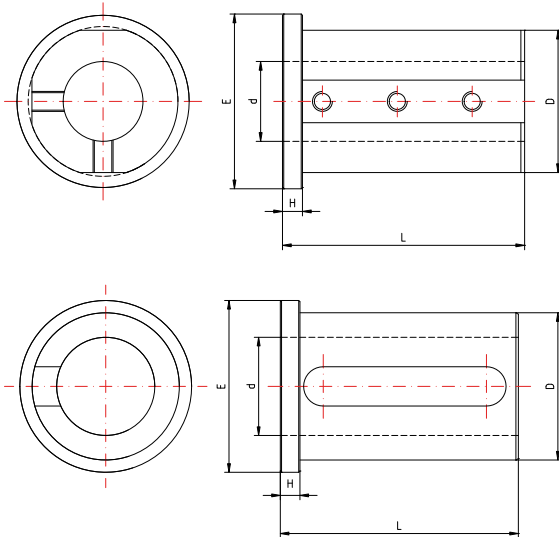


ARTICOLO-ITEM	D h7	d H8	L	H	E
B40-6-60	40	6	60	6	49

ARTICOLO-ITEM	D h7	d H8	L	H	E
B40-8-80	40	8	80	8	49
B40-10-80	40	10	80	8	49
B40-12-80	40	12	80	8	49
B40-14-80	40	14	80	8	49
B40-16-80	40	16	80	8	49
B40-18-80	40	18	80	8	49
B40-20-80	40	20	80	8	49
B40-25-80	40	25	80	8	49

ARTICOLO-ITEM	D h7	d H7	L	H	E
B40-32-90	40	32	90	15	49

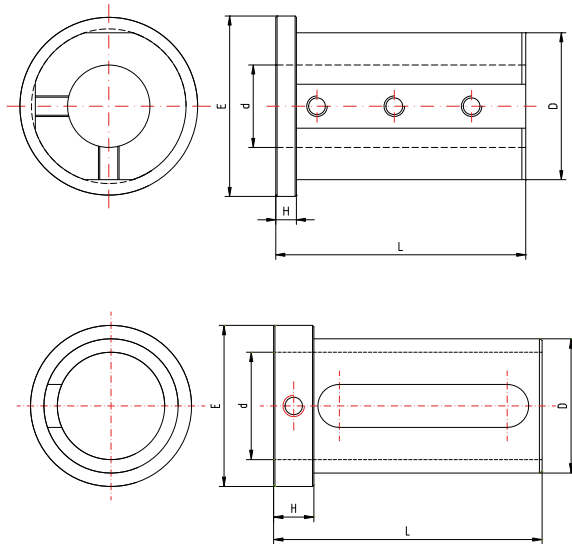
D=45 mm.



ARTICOLO-ITEM	D h7	d H8	L	H	E
B45-8-80	45	8	80	8	54
B45-10-80	45	10	80	8	54
B45-12-80	45	12	80	8	54
B45-16-80	45	16	80	8	54
B45-20-80	45	20	80	8	54
B45-25-80	45	25	80	8	54

ARTICOLO-ITEM	D h7	d H7	L	H	E
B45-32-80	45	32	80	8	54
B45-40-80	45	40	80	8	54

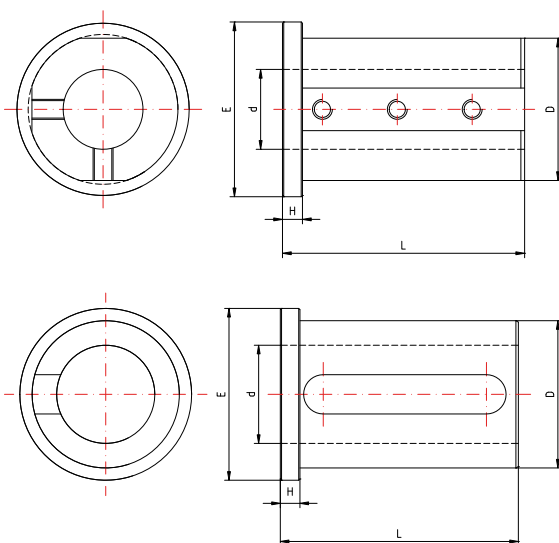
D=50 mm.



ARTICOLO-ITEM	D h7	d H8	L	H	E
B50-8-90	50	8	90	8	59
B50-10-90	50	10	90	8	59
B50-12-90	50	12	90	8	59
B50-14-90	50	14	90	8	59
B50-16-90	50	16	90	8	59
B50-18-90	50	18	90	8	59
B50-20-90	50	20	90	8	59
B50-25-90	50	25	90	8	59
B50-32-90	50	32	90	8	59

ARTICOLO-ITEM	D h7	d H7	L	H	E
B50-40-100	50	40	100	15	59

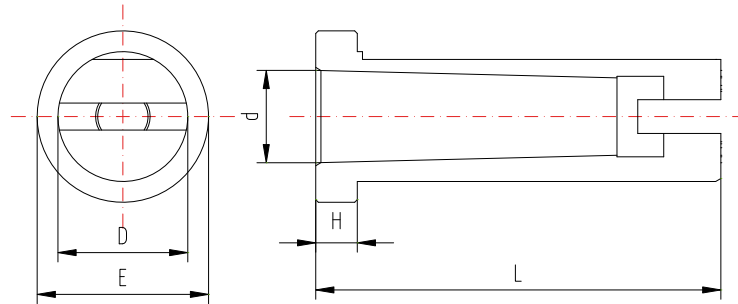
D=60 mm.



ARTICOLO-ITEM	D h7	d H8	L	H	E
B60-12-97	60	12	97	8	69
B60-16-97	60	16	97	8	69
B60-20-97	60	20	97	8	69
B60-25-97	60	25	97	8	69
B60-32-97	60	32	97	8	69

ARTICOLO-ITEM	D h7	d H7	L	H	E
B60-40-97	60	40	97	15	69
B60-50-97	60	50	97	15	69

9.2 Bussole coniche *Conical bushes*



D=25 mm.

ARTICOLO-ITEM	D h7	CM	L	H	E
BC25-1-65	25	1	65	6	33
BC25-2-78	25	2	78	8	33

D=25,40 mm. (1")

ARTICOLO-ITEM	D h7	CM	L	H	E
BC25,40-1-65	25,40	1	65	6	33
BC25,40-2-78	25,40	2	78	8	33

D=31,75 mm. (1 1/4")

ARTICOLO-ITEM	D h7	CM	L	H	E
BC31,75-1-65	31,75	1	65	6	39
BC31,75-2-78	31,75	2	78	8	39
BC31,75-3-97	31,75	3	97	8	39

D=32 mm.

ARTICOLO-ITEM	D h7	CM	L	H	E
BC32-1-65	32	1	65	6	39
BC32-2-78	32	2	78	8	39
BC32-3-97	32	3	97	8	39

D=35 mm.

ARTICOLO-ITEM	D h7	CM	L	H	E
BC35-1-65	35	1	65	6	44
BC35-2-78	35	2	78	8	44
BC35-3-97	35	3	97	8	44

D=40 mm.

ARTICOLO-ITEM	D h7	CM	L	H	E
BC40-1-65	40	1	65	6	49
BC40-2-78	40	2	78	8	49
BC40-3-97	40	3	97	8	49
BC40-4-120	40	4	120	8	49

D=45 mm.

ARTICOLO-ITEM	D h7	CM	L	H	E
BC45-2-78	45	2	78	8	54
BC45-3-97	45	3	97	8	54
BC45-4-120	45	4	120	8	54

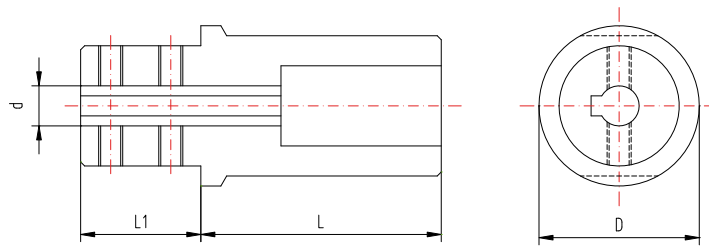
D=50 mm.

ARTICOLO-ITEM	D h7	CM	L	H	E
BC50-2-78	50	2	78	8	59
BC50-3-97	50	3	97	8	59
BC50-4-120	50	4	120	8	59

D=60 mm.

ARTICOLO-ITEM	D h7	CM	L	H	E
BC60-2-78	60	2	78	8	69
BC60-3-97	60	3	97	8	69
BC60-4-120	60	4	120	8	69
BC60-5-155	60	5	155	8	69

9.3 Bussole con passaggio del refrigerante *Bushes with flow of cooling liquid*



D=25 mm.

ARTICOLO-ITEM	D h7	d H8	L	L1
BL 25-6	25	6	65	30
BL 25-8	25	8	65	30
BL 25-10	25	10	65	30
BL 25-12	25	12	65	30
BL 25-16	25	16	65	30

D=32 mm.

ARTICOLO-ITEM	D h7	d H8	L	L1
BL 32-6	32	6	65	30
BL 32-8	32	8	65	30
BL 32-10	32	10	65	30
BL 32-12	32	12	65	30
BL 32-14	32	14	65	30
BL 32-16	32	16	65	30
BL 32-18	32	18	65	30
BL 32-20	32	20	65	30

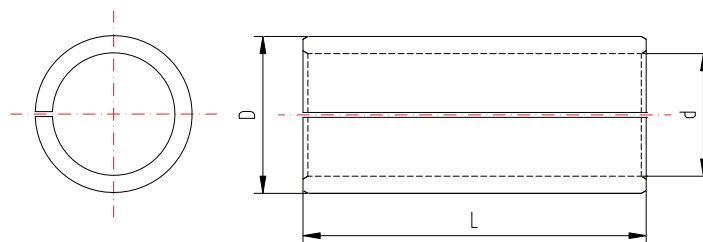
D=40 mm.

ARTICOLO-ITEM	D h7	d H8	L	L1
BL 40-6	40	6	65	30
BL 40-8	40	8	65	30
BL 40-10	40	10	65	30
BL 40-12	40	12	65	30
BL 40-14	40	14	65	30
BL 40-16	40	16	65	30
BL 40-18	40	18	65	30
BL 40-20	40	20	65	30
BL 40-25	40	25	65	30

D=50 mm.

ARTICOLO-ITEM	D h7	d H8	L	L1
BL 50-12	50	12	65	30
BL 50-14	50	14	65	30
BL 50-16	50	16	65	30
BL 50-18	50	18	65	30
BL 50-20	50	20	65	30
BL 50-25	50	25	65	30
BL 50-32	50	32	65	30

9.4 - Bussole elastiche *Elastic bushes*

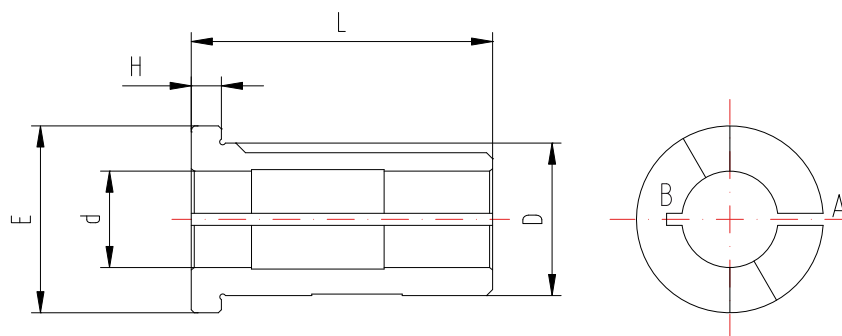


ARTICOLO-ITEM	D h7	d H7	L
BE-16-12-40	16	12	40
BE-20-16-50	20	16	50
BE-25-20-60	25	20	60
BE-32-25-70	32	25	70
BE-40-32-80	40	32	80
BE-50-40-90	50	40	90

9.5 Bussole elastiche per barre antivibranti *Elastic bushes for vibration damper bars*

I Questo tipo di bussola è stata studiata per eliminare le vibrazioni dell'utensile inserito nella bussola durante la lavorazione. Una speciale gomma antivibrante viene inserita nelle fessure "A" e "B" allo scopo di ammortizzare le vibrazioni che crea l'utensile durante la lavorazione in fori profondi.

GB This kind of bush has been developed to eliminate every vibration caused by the tool during the machining. "A" and "B" slots are filled with a special rubber in order to dampen the vibrations the tool creates when it works in deep holes.



D=25 mm.

ARTICOLO-ITEM	D h6	d H7	L	H	E
BG 25-8-50	25	8	50	5	31
BG 25-10-50	25	10	50	5	31
BG 25-12-50	25	12	50	5	31
BG 25-16-50	25	16	50	5	31
BG 25-20-50	25	20	50	5	31

D=32 mm.

ARTICOLO-ITEM	D h6	d H7	L	H	E
BG 32-8-60	32	8	60	5	39
BG 32-10-60	32	10	60	5	39
BG 32-12-60	32	12	60	5	39
BG 32-16-60	32	16	60	5	39
BG 32-20-60	32	20	60	5	39
BG 32-25-60	32	25	60	5	39

D=40 mm.

ARTICOLO-ITEM	D h6	d H7	L	H	E
BG 40-8-75	40	8	75	5	48
BG 40-10-75	40	10	75	5	48
BG 40-12-75	40	12	75	5	48
BG 40-16-75	40	16	75	5	48
BG 40-20-75	40	20	75	5	48
BG 40-25-75	40	25	75	5	48
BG 40-32-75	40	32	75	5	48

9.6 Bussole speciali *Special bushes*

I Se siete interessati a bussole speciali non comprese nel presente Catalogo, inviateci questa pagina debitamente compilata; sarà nostra cura servirVi al meglio e con la massima tempestività.

GB If you are interested in special bushes, not included in this Catalogue, please fill this page in and send it to us: we shall do our best to provide you with prompt efficient service.

9.7 Disegno per ordini di bussole speciali *Technical drawing for ordering special bushes*

BRIGHETTI MECCANICA S.r.L.

Tel./Phone: 0039 51 728168

Fax: 0039 51 6463514

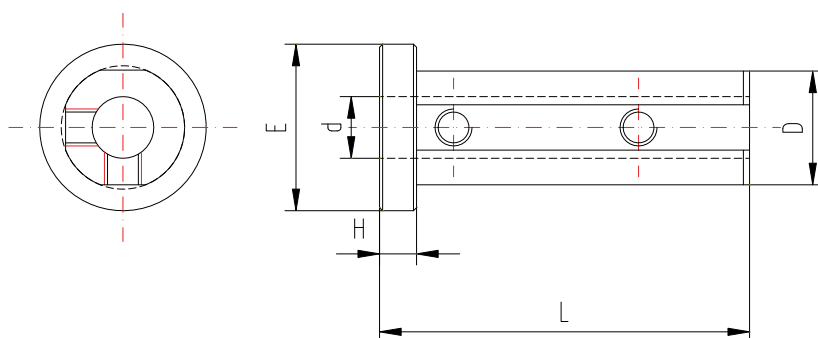
E-mail: info@brighetti.it

Società/Company: _____

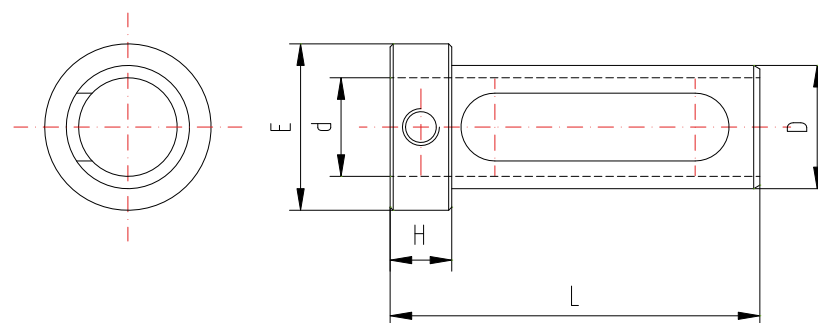
Indirizzo/Address: _____

Tel/Phone: _____ Fax: _____ E-mail: _____

Q.tà/Q.ty: _____



D	d	L	H	E



D	d	L	H	E