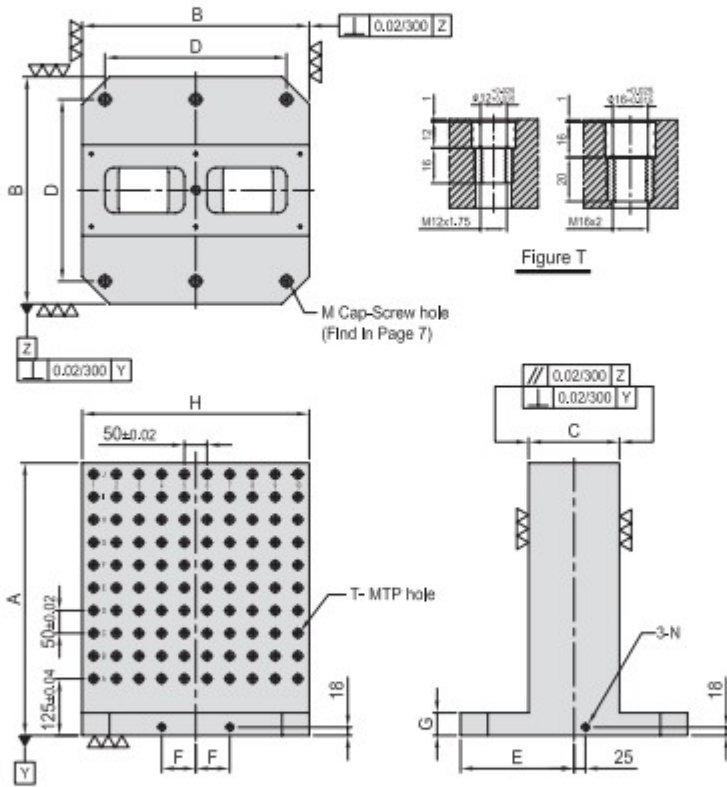




# BP11

## DOUBLE SIDED TOOLING COLUMN

- Material / Finish:  
Material: Cast Iron FC300(JIS) / GG30(DIN)  
Heat treated (Normalized)  
Alignment Bushing: SUJ2(JIS) / 100Cr6 (DIN), heat treated  
Threaded Insert: S45C(JIS) / CK45(DIN), heat treated  
MTP hole spacing:  $50 \pm 0.02$
- Application: Horizontal Machining Center.
- Features: Alignment bushing & thread insert at every hole location, easily adapts to standardized jig components.
- Eye bolt & top cover included.



MODEL NO.	A	B	C	D	E	F	G	H	T	M	N	MTP	Mount Jig holes	kg	MODEL NO.	A	B	C	D	E	F	G	H	T	M	N	MTP	Mount Jig holes	kg		
BP11-300300-0500-12	500	300	80	250	150	40	50	300	φ12	M12	M12	M12	96	4	116	BP11-300300-0500-16	500	300	80	250	150	40	50	300	φ16	M16	M12	M12	96	4	105
BP11-400400-0500-12	500	400	150	320	200	55	50	400	φ12	M12	M16	M16	128	4	165	BP11-400400-0500-16	500	400	150	320	200	55	50	400	φ16	M16	M16	M16	128	4	160
BP11-400400-0650-12	650	400	150	320	200	55	50	400	φ12	M12	M16	M16	176	4	210	BP11-400400-0650-16	650	400	150	320	200	55	50	400	φ16	M16	M16	M16	176	4	205
BP11-500500-0600-12	600	500	200	400	250	75	50	500	φ12	M12	M16	M16	200	6	265	BP11-500500-0600-16	600	500	200	400	250	75	50	500	φ16	M16	M16	M16	200	6	260
BP11-500500-0750-12	750	500	200	400	250	75	50	500	φ12	M12	M16	M16	260	6	335	BP11-500500-0750-16	750	500	200	400	250	75	50	500	φ16	M16	M16	M16	260	6	330
BP11-630630-0700-12	700	630	250	500	315	100	50	630	φ12	M12	M16	M16	288	6	435	BP11-630630-0700-16	700	630	250	500	315	100	50	630	φ16	M16	M16	M16	288	6	430
BP11-630630-0850-12	850	630	250	500	315	100	50	630	φ12	M12	M16	M16	360	6	515	BP11-630630-0850-16	850	630	250	500	315	100	50	630	φ16	M16	M16	M16	360	6	505
BP11-800800-0800-12	800	800	300	640	400	135	50	800	φ12	M12	M16	M16	420	6	660	BP11-800800-0800-16	800	800	300	640	400	135	50	800	φ16	M16	M16	M16	420	6	650
BP11-800800-1000-12	1000	800	300	640	400	135	50	800	φ12	M12	M16	M16	540	6	800	BP11-800800-1000-16	1000	800	300	640	400	135	50	800	φ16	M16	M16	M16	540	6	790
BP11-10001000-1000-12	1000	1000	350	800	500	165	55	1000	φ12	M12	M20	M16	684	6	1158	BP11-10001000-1000-16	1000	1000	350	800	500	165	55	1000	φ16	M16	M20	M16	684	6	1158
BP11-10001000-1250-12	1250	1000	350	800	500	165	55	1000	φ12	M12	M20	M16	874	6	1375	BP11-10001000-1250-16	1250	1000	350	800	500	165	55	1000	φ16	M16	M20	M16	874	6	1375

\*Special Design Welcome !