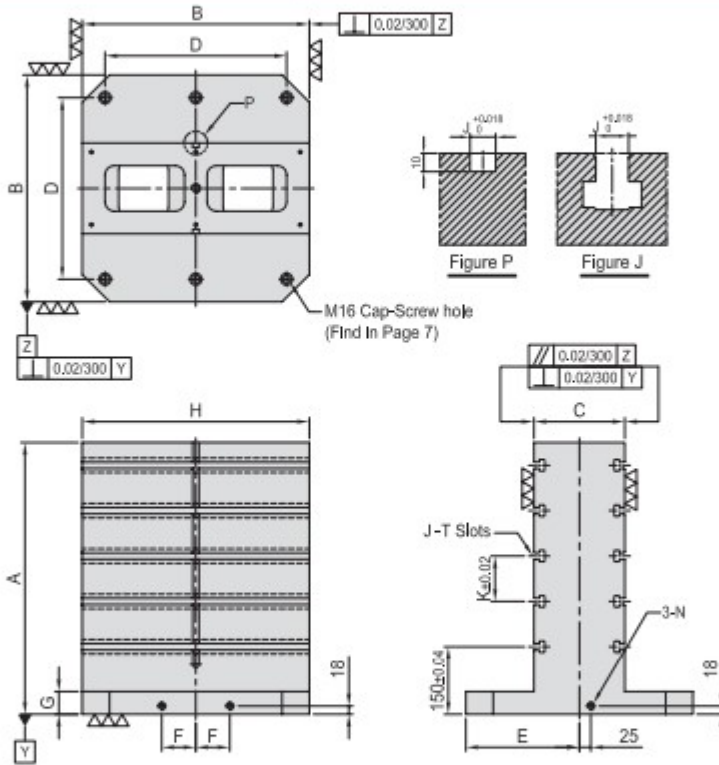




BP12

DOUBLE SIDED TOOLING COLUMN

- Material / Finish:
Material: Cast Iron FC300(JIS) / GG30(DIN)
Heat treated (Normalized)
- Application: Horizontal Machining Center.
- Features: T-Slots running horizontally, key-way running vertically, easily adapts to standardized jig components.
- Eye bolt & top cover included.



MODEL NO.	A	B	C	D	E	F	G	M	N	H	J	K	Mounting holes	kg	MODEL NO.	A	B	C	D	E	F	G	M	N	H	J	K	Mounting holes	kg
BP12-400400-0500-14	500												4	170	BP12-400400-0500-18	500											4	165	
BP12-400400-0650-14	650	400	150	320	200	55	50	M16	M16	400	14	100		220	BP12-400400-0650-18	650	400	150	320	200	55	50	M16	M16	400	18	100	4	210
BP12-500500-0600-14	600													290	BP12-500500-0600-18	600											6	280	
BP12-500500-0750-14	750	500	200	400	250	75	50	M16	M16	500	14	100		335	BP12-500500-0750-18	750	500	200	400	250	75	50	M16	M16	500	18	100	6	325
BP12-630630-0700-14	700													440	BP12-630630-0700-18	700												430	
BP12-630630-0850-14	850	630	250	500	315	100	50	M16	M16	630	14	125		515	BP12-630630-0850-18	850	630	250	500	315	100	50	M16	M16	630	18	125	6	500
BP12-800800-0800-14	800													670	BP12-800800-0800-18	800												660	
BP12-800800-1000-14	1000	800	300	640	400	135	50	M16	M16	800	14	150		790	BP12-800800-1000-18	1000	800	300	640	400	135	50	M16	M16	800	18	150	6	785
BP12-10001000-1000-14	1000													1158	BP12-10001000-1000-18	1000												1158	
BP12-10001000-1250-14	1250	1000	350	800	500	165	55	M20	M16	1000	14	150		1375	BP12-10001000-1250-18	1250	1000	350	800	500	165	55	M20	M16	1000	18	150	6	1375

*Special Design Welcome !