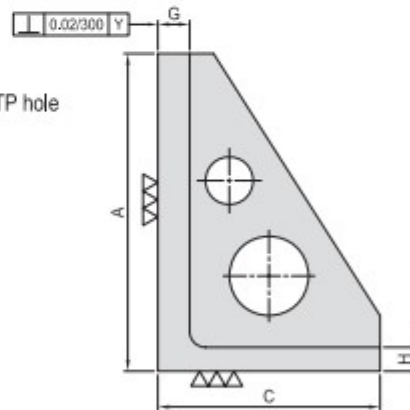
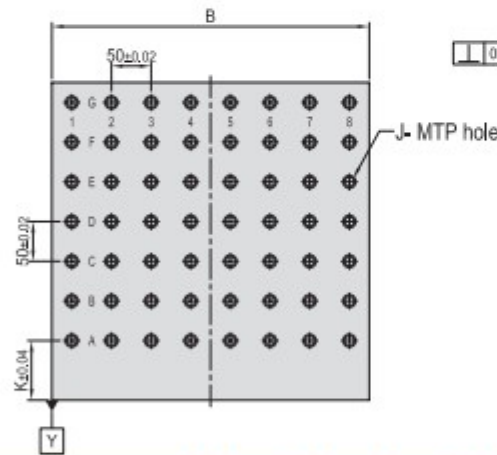
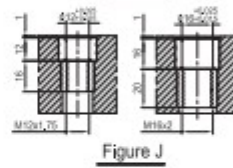
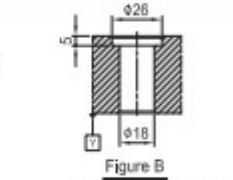
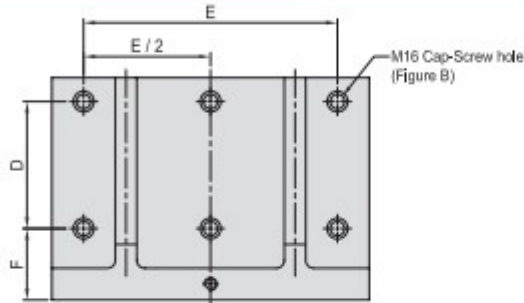




# BP21

## M/C ANGLE PLATE

- Material / Finish:  
Material: Cast Iron FC300(JIS) / GG30(DIN)  
Heat treated (Normalized)  
Alignment Bushing: SUJ2(JIS) / 100Cr6(DIN), heat treated  
Threaded Insert: S45C(JIS) / CK45(DIN), heat treated  
MTP hole spacing:  $50 \pm 0.02$
- Application: HMC / VMC.
- Features: Alignment bushing & thread insert at every hole location, easily adapts to standardized jig components.



MODEL NO.	A	B	C	D	E	F	G	H	J	K	MTP	Mounting holes	kg	
BP21-220300-0300-12	300	300	220	100	250	90	40	30	φ 12	M12	75	30	6	50
BP21-280400-0400-12	400	400	280	160	320							56		87
BP21-340500-0500-12	500	500	340	200	400	90	50	35	φ 12	M12	75	90	6	173
BP21-435630-0630-12	630	630	435	250	500							40		144
BP21-525800-0800-12	800	800	525	320	640	115	50	45	φ 12	M12	75	240	6	477
BP21-220300-0300-16	300	300	220	100	250	90	40	30	φ 16	M16	75	30	6	46
BP21-280400-0400-16	400	400	280	160	320							56		85
BP21-340500-0500-16	500	500	340	200	400	90	50	35	φ 16	M16	75	90	6	170
BP21-435630-0630-16	630	630	435	250	500							40		144
BP21-525800-0800-16	800	800	525	320	640	115	50	45	φ 16	M16	75	240	6	470

\*Social Design Welcome !