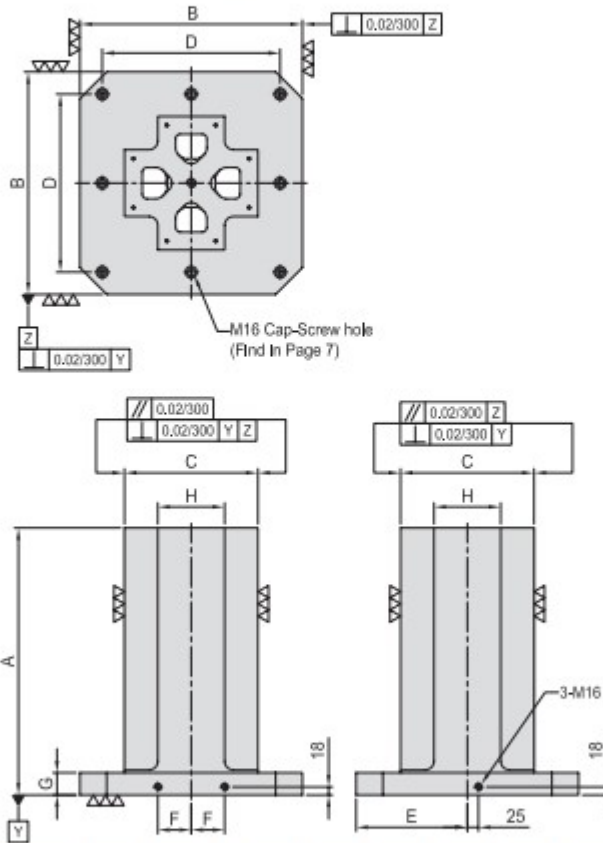




BP29

CROSS TOOLING COLUMN

- Material / Finish:
Material: Cast Iron FC300(JIS) / GG30(DIN)
Heat treated (Normalized)
- Application: Horizontal Machining Center.
- Features: Ready to accept a hole pattern for your special jig.
- Eye bolt & top cover included.



MODEL NO.	A	B	C	D	E	F	G	H	Mounting holes	kg
BP29-400400-0500	500	400	250	320	200	55	50	125	4	154
BP29-400400-0650	650									188
BP29-500500-0600	600	500	300	400	250	75	50	150	8	244
BP29-500500-0750	750									287
BP29-630630-0700	700	630	350	500	315	100	50	200	8	373
BP29-630630-0850	850									424
BP29-800800-0800	800	800	500	640	400	135	50	300	8	648
BP29-800800-1000	1000									753

*Special Design Welcome !