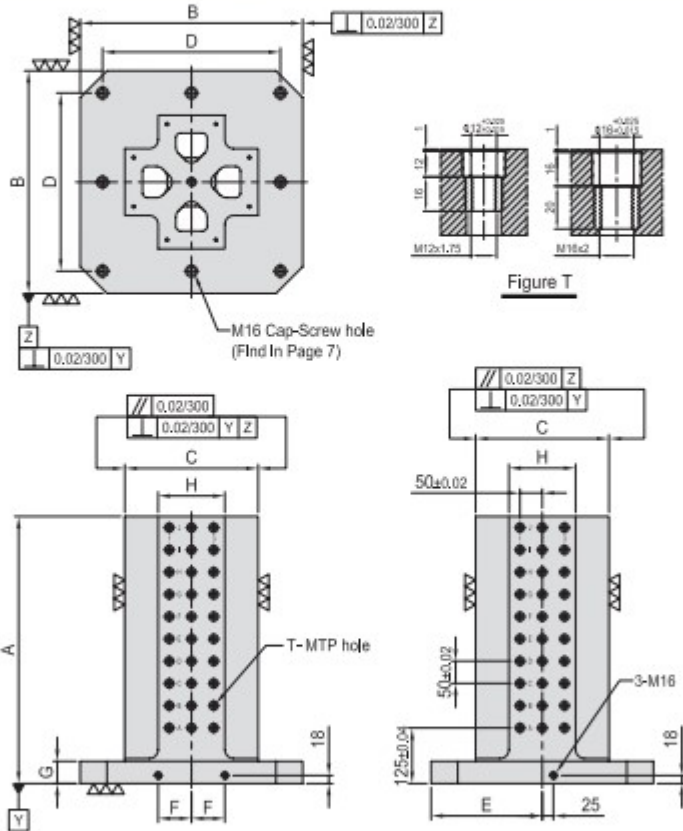




# BP30

## CROSS TOOLING COLUMN

- Material / Finish:  
Material: Cast Iron FC300 (JIS) / GG30 (DIN)  
Heat treated (Normalized)  
Alignment bushing: SUJ2(JIS) / 100Cr6(DIN), heat treated  
Threaded Insert: S45C(JIS) / CK45(DIN), heat treated  
MTP hole spacing:  $50 \pm 0.02$
- Application: Horizontal Machining Center.
- Features: Alignment bushing & thread insert at every hole location, easily adapts to standardized jig components.
- Eye bolt & top cover included.



MODEL NO.	A	B	C	D	E	F	G	H	T	MTP	Mount jig holes	kg
BP30-400400-0500-12	500									64	4	152
BP30-400400-0650-12	650	400	250	320	200	55	50	125	$\phi 12$	M12	88	186
BP30-500500-0800-12	800									120	8	250
BP30-500500-0750-12	750	500	300	400	250	75	50	150	$\phi 12$	M12	156	293
BP30-630630-0700-12	700									192	8	368
BP30-630630-0850-12	850	630	350	500	315	100	50	200	$\phi 12$	M12	240	418
BP30-800800-0800-12	800									336	8	640
BP30-800800-1000-12	1000	800	500	640	400	135	50	300	$\phi 12$	M12	432	740

MODEL NO.	A	B	C	D	E	F	G	H	T	MTP	Mount jig holes	kg
BP30-400400-0500-16	500									64	4	151
BP30-400400-0650-16	650	400	250	320	200	55	50	125	$\phi 16$	M16	88	184
BP30-500500-0800-16	800									120	8	247
BP30-500500-0750-16	750	500	300	400	250	75	50	150	$\phi 16$	M16	156	290
BP30-630630-0700-16	700									192	8	364
BP30-630630-0850-16	850	630	350	500	315	100	50	200	$\phi 16$	M16	240	413
BP30-800800-0800-16	800									336	8	633
BP30-800800-1000-16	1000	800	500	640	400	135	50	300	$\phi 16$	M16	432	733

\*Special Design Welcome !