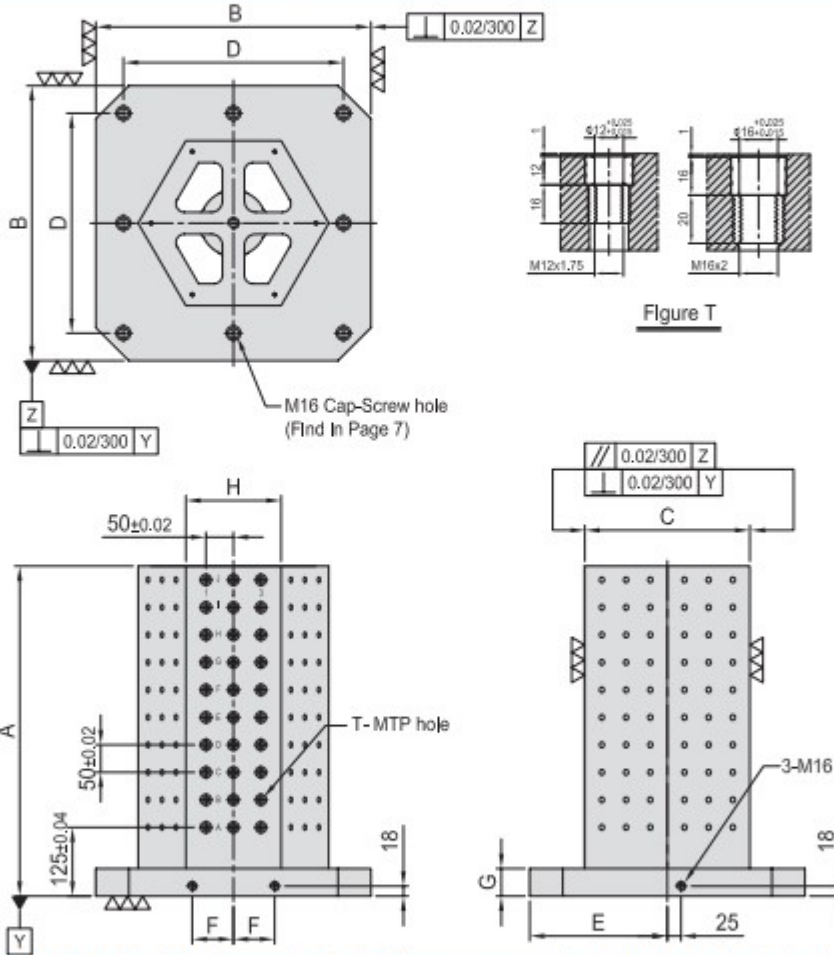


BP32

HEXAGONAL CUBE



- Material / Finish:
Material: Cast Iron FC300 (JIS) / GG30 (DIN)
Heat treated (Normalized)
Alignment bushing: SUJ2(JIS) / 100Cr6(DIN), heat treated
Threaded Insert: S45C(JIS) / CK45(DIN), heat treated
MTP hole spacing: 50 ± 0.02
- Application: Horizontal Machining Center.
- Features: Alignment bushing & thread insert at every hole location, easily adapts to standardized jig components.
- Eye bolt & top cover included.



MODEL NO.	A	B	C	D	E	F	G	H	T	MTP	Mount-4g holes	kg	MODEL NO.	A	B	C	D	E	F	G	H	T	MTP	Mount-4g holes	kg	
BP32-400400-0500-12	500									96	4	149	BP32-400400-0500-16	500								96	4	147		
BP32-400400-0650-12	650	400	250	320	200	55	50	144	$\phi 12$	M12	132	180	BP32-400400-0650-16	650	400	250	320	200	55	50	144	$\phi 16$	M16	132	4	177
BP32-500500-0600-12	600									180	8	228	BP32-500500-0600-16	600								180	8	224		
BP32-500500-0750-12	750	500	300	400	250	75	50	173	$\phi 12$	M12	234	267	BP32-500500-0750-16	750	500	300	400	250	75	50	173	$\phi 16$	M16	234	8	262
BP32-630630-0700-12	700									216	8	356	BP32-630630-0700-16	700								216	8	351		
BP32-630630-0850-12	850	630	350	500	315	100	50	202	$\phi 12$	M12	270	407	BP32-630630-0850-16	850	630	350	500	315	100	50	202	$\phi 16$	M16	270	8	396
BP32-800800-0800-12	800									420	8	609	BP32-800800-0800-16	800								420	8	600		
BP32-800800-1000-12	1000	800	500	640	400	135	50	289	$\phi 12$	M12	540	700	BP32-800800-1000-16	1000	800	500	640	400	135	50	289	$\phi 16$	M16	540	8	688

*Special Design Welcome !