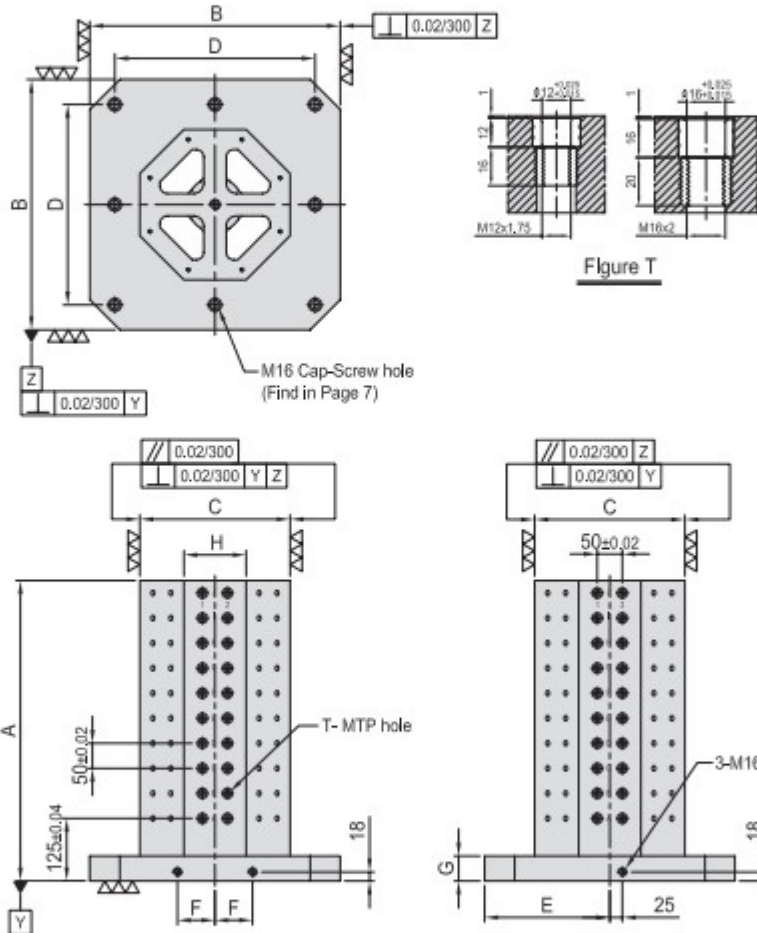




BP34

OCTAGONAL CUBE

- Material / Finish:
Material: Cast Iron FC300 (JIS) / GG30 (DIN)
Heat treated (Normalized)
Alignment bushing: SUJ2(JIS) / 100Cr6(DIN), heat treated
Threaded Insert: S45C(JIS) / CK45(DIN), heat treated
MTP hole spacing: 50 ± 0.02
- Application: Horizontal Machining Center.
- Features: Alignment bushing & thread insert at every hole location, easily adapts to standardized jig components.
- Eye bolt & top cover included.



MODEL NO.	A	B	C	D	E	F	G	H	T	MTP	Mount -jig holes	kg	MODEL NO.	A	B	C	D	E	F	G	H	T	MTP	Mount -jig holes	kg
BP34-400400-0500-12	500	400	250	320	200	55	50	103	$\phi 12$	M12	128	145	BP34-400400-0500-16	500	400	250	320	200	55	50	103	$\phi 16$	M16	128	142
BP34-400400-0650-12	650										176	175	BP34-400400-0650-16	650									176	171	
BP34-500500-0600-12	600										160	223	BP34-500500-0600-16	600									160	8	219
BP34-500500-0750-12	750										208	259	BP34-500500-0750-16	750									208	8	255
BP34-630630-0700-12	700										192	345	BP34-630630-0700-16	700									192	8	341
BP34-630630-0850-12	850										240	389	BP34-630630-0850-16	850									240	8	384
BP34-800800-0800-12	800										448	611	BP34-800800-0800-16	800									448	8	601
BP34-800800-1000-12	1000										576	697	BP34-800800-1000-16	1000									576	8	685

*Special Design Welcome !