

BP37

H/CAST SECTION



- Material / Finish:
Material: Cast Iron FC300(JIS) / GG30(DIN)
- Heat treated (Normalized)
- Features: Easily adapts to standardized jig components.

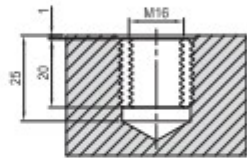
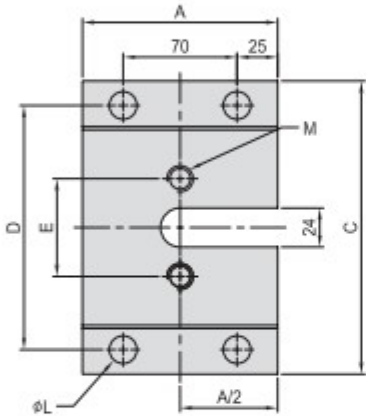
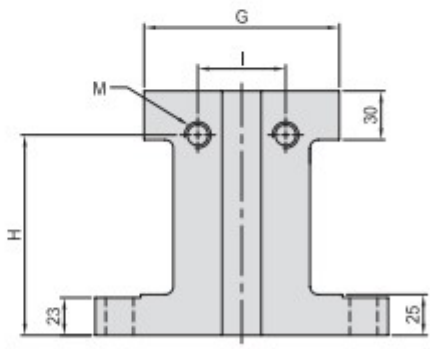
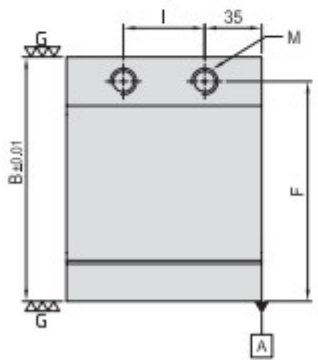


Figure M



MODEL NO.	A	B	C	D	E	F	G	H	I	M	L	kg
BP37-120180-0150-16	120	150	180	150	60	135	120	123	50	M16	17	15.5

*Special Design Welcome !