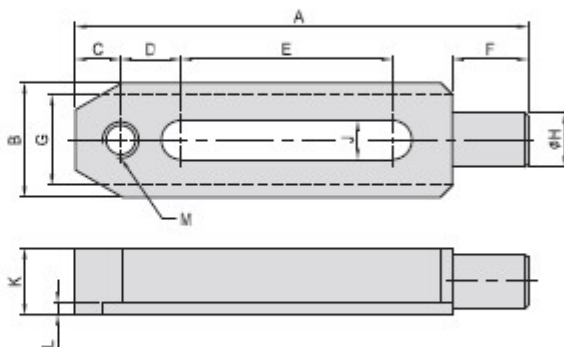
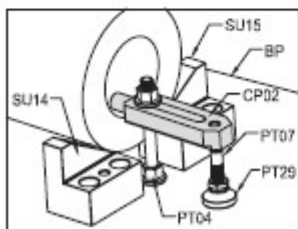


CP02

TAPPED-NOSE STRAP



- Material / Finish :
Material : S45C(JIS) / CK45(DIN)
- Heat treated : HRC 32°~38°.
- Surface finish : Black Oxide.
- Features : The cylindrical pin minimizes contact area and is useful for clamping in horizontal holes & round profiles .



MODEL NO.	A	B	C	D	E	F	G	H	J	K	L	M	Kg
CP02-12150	150	38	15	20	70	25	30	18	13	22	4	M12	0,58
CP02-16150	150	48	20	25	40	35	40	24	17	32	5	M16	1,12
CP02-16200	200				90								1,50
CP02-20200	200	60	30	35	60	40	50	28	21	35	6	M20	2,22
CP02-20250	250				110								2,74