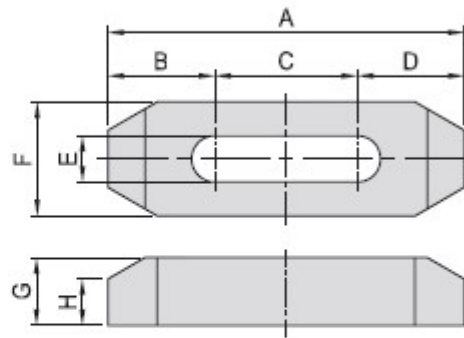
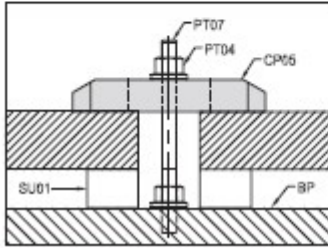


CP05

DOUBLE ENDED CLAMP



- Material / Finish :
- Material : S45C(JIS) / CK45(DIN)
- Heat treated : HRC 32°-38°
- Surface finish : Black Oxide,



MODEL NO.	A	B	C	D	E	F	G	H	kg
CP05-12065	65	20,0	25	20,0			19	13	0,22
CP05-12100	100	30,0	40	30,0	13	32			0,33
CP05-12150	150	49,5	51	49,5			25	15	0,46
CP05-16080	80	28,0	24	28,0			22	14	0,34
CP05-16125	125	42,0	41	42,0	17	38			0,57
CP05-16150	150	51,0	48	51,0			25	15	0,66
CP05-20100	100	34,0	32	34,0			22	14	0,41
CP05-20125	125	42,5	40	42,5	21	38			0,62
CP05-20150	150	51,0	48	51,0			25	15	0,82
CP05-24150	150	51,0	48	51,0	26	50	32	19	1,14