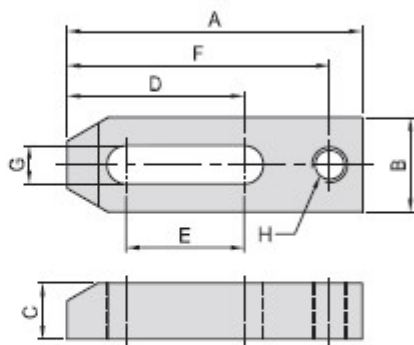
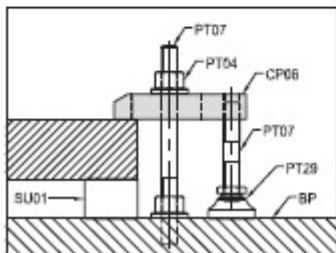


CP06

TAPPED CLAMP STRAP



- Material / Finish :
Material : S45C(JIS) / Ck45(DIN)
- Heat treated : HRC 32°-38°
- Surface finish : Black Oxide.
- Application : Use with various knobs, jack screws, clamps & pads; such as PT29.



MODEL NO.	A	B	C	D	E	F	G	H	kg
CP06-12065	65			32	14	52			0,22
CP06-12080	80	32	19	48	25	69	13	M12	0,27
CP06-12100	100			60	40	89			0,33
CP06-16080	80		19	40	17	65			0,32
CP06-16100	100	38	25	55	30	85	17	M16	0,53
CP06-16125	125		25	70	45	110			0,65
CP06-20150	150		25	82	50	134			1,10
CP06-20200	200	50	32	112	80	184	21	M20	1,90