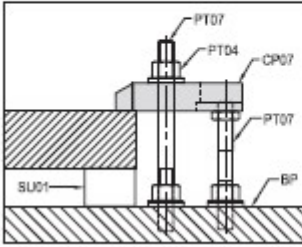
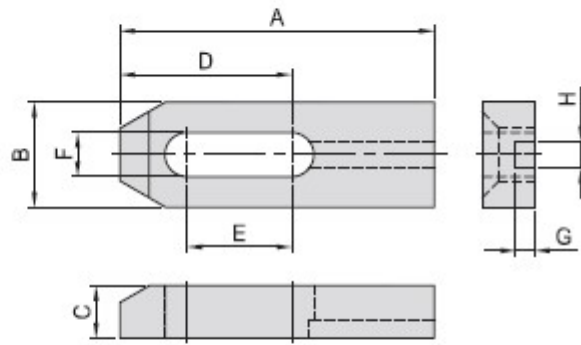


SLOTTED END CLAMP STRAP



- Material / Finish :
Material : S45C(JIS) / CK45(DIN)
- Heat treated : HRC 32°~38°.
- Surface finish : Black Oxide.
- Application : Locating slot keeps clamp properly oriented.



MODEL NO.	A	B	C	D	E	F	G	H	kg
CP07-12065	65			32	14				0.26
CP07-12080	80	32	22	48	25	13	7	10	0.31
CP07-12100	100			60	40				0.38
CP07-16080	80		22	40	17				0.38
CP07-16100	100	38		55	30	17	8	12	0.53
CP07-16125	125		25	70	45				0.65
CP07-20150	150		25	82	50				1.10
CP07-20200	200	50	32	112	80	21	9	13	1.40