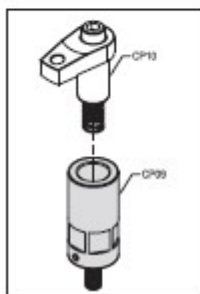
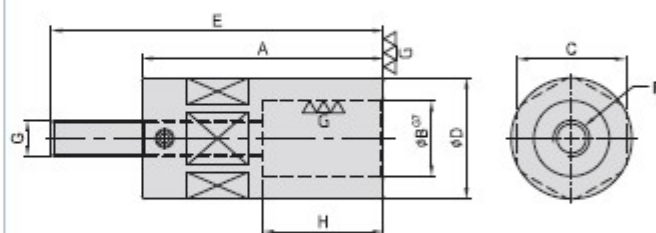


# CP09

## SWING CLAMP MOUNT/EXTENSION



- Material / Finish :  
Material : S45C(JIS) / CK45(DIN)
- Heat treated : HRC 38°~42°.
- Surface finish : Black Oxide.
- Application : Use with CP10 swing clamp to gain extra height.



MODEL NO.	A	B	C	D	E	F	G	H	kg
CP09-12080	80	25	36	40	110	M12	M12	40	0,60
CP09-12100	100	25	36	40	130	M12	M12	40	0,78
CP09-16080	80	32	46	50	110	M16	M16	40	0,83
CP09-16100	100	32	46	50	130	M16	M16	40	1,25