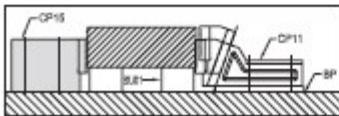
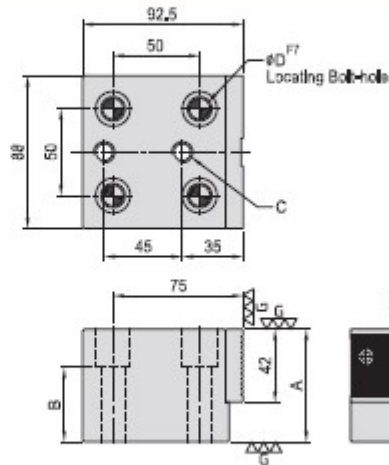


CP15

SERRATED BLOCK STOP



- Material :
Body : S45C(JIS)/CK45(DIN)
jaw : YK30(JIS) / C105W1(DIN),
- Heat treated :
Body : HRC 40°,
jaw : HRC 58°.
- Surface finish : Black Oxide.
- Application : Serrated stop is used with CP11 free vise, Useful for holding rough parts and where heavy clamping is needed.



MODEL NO.	A	B	C	D	kg
CP15-1265	65	43	M12	12	3,52
CP15-1290	80	58			4,22
CP15-1665	65	38	M16	16	3,24
CP15-1690	80	53			3,78