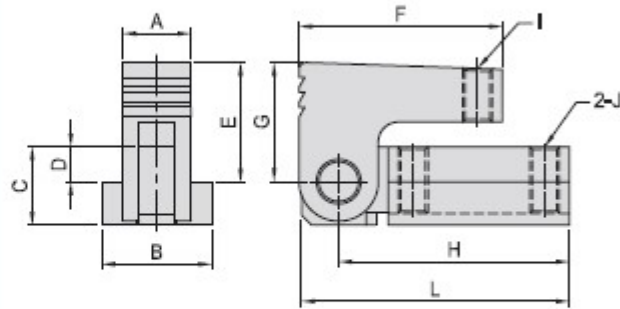


CP22

T-SLOT MINIATURE CLAMP



- Material : S45C (JIS)
- Heat treated : HRC 35°~38°

MODEL NO.	A	B	C	D	E	F	G	H	I	L	J	kg
CP22-1218	10,8	17,5	12,7	7,2	23,2		22,0	48,0				0,10
CP22-1422	13,8	22,2	15,8	7,1	24,1	41	24,0	48,0	M6	54,0	M6	0,16
CP22-1625	15,8	25,4	15,8	7,1	27,1		27,0		M8	65,0	M8	0,22
CP22-1828	17,5	28,5	19,0	7,9	28,9	50	29,0	55,0	M8	65,0	M8	0,29
CP22-2032	19,7	31,7	25,4	11,4	33,9	50	34,0	55,0	M10	65,0	M10	0,40
CP22-2240	21,7	38,0	28,0	12,8	38,8	65	39,5	71,0	M12	81,5	M12	0,70
CP22-2841	27,5	46,7	44,0	25,0	49,0	71	49,0	72,5	M12	86,5	M12	1,20
CP22-3559	34,7	55,0	48,0	24,5	64,0	103	62,5	113,5	M16	130,0	M16	2,75