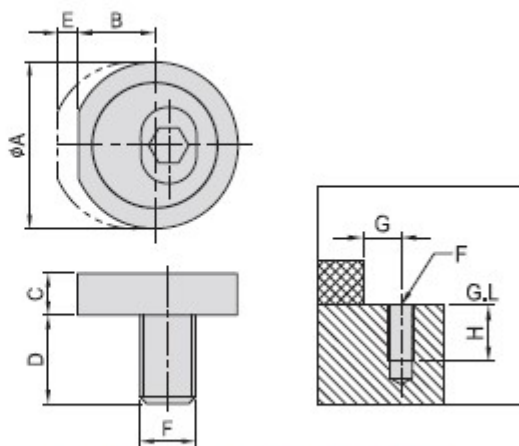


CP24

ECCENTRIC CAM LOCK



- Material : S45C (JIS)
- Heat treated : HRC 35°(ECCENTRIC CAM)



MODEL NO.	A	B	C	D	E	F	G	H	kg
CP24-0824	24	11,0	6	12,8	3	M 8	11,5	17	0,020
CP24-1026	26	11,8	8	14,3	4	M10	12,5	22	0,030
CP24-1230	30	13,5	9	17,8	5	M12	14,5	22	0,050
CP24-1638	38	16,0	12	20,8	6	M16	17,5	26	0,115