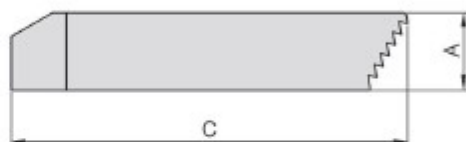
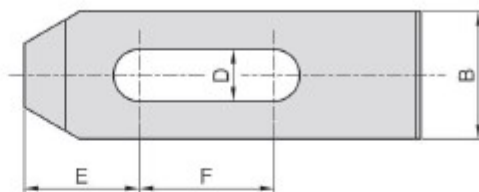


CP25

STEP CLAMP



- Material / Finish :
Material : S45C
- Heat treated : HRC 32°-38°
- Surface finish : Black Oxide
- Application : Used with SU25.

MODEL NO.	A	B	C	D	E	F	kg
CP25-10063	13	25	63	11	18	19	0,100
CP25-10100	16	25	100		27	37	0,215
CP25-10150	19	32	150		30	60	0,570
CP25-12063	13	25	63	13	20	14	0,100
CP25-12100	19	32	100		29	34	0,320
CP25-12150	22	32	150		32	50	0,650
CP25-14063	13	25	63	15	20	14	0,100
CP25-14100	19	32	100		29	34	0,315
CP25-14150	22	32	150		32	50	0,600
CP25-16063	16	32	63	17	22	12	0,160
CP25-16100	19	38	100		31	26	0,400
CP25-16150	22	38	150		40	47	0,710
CP25-18063	16	32	63	20	22	12	0,140
CP25-18100	19	38	100		31	26	0,380
CP25-18150	22	38	150		40	47	0,750
CP25-20100	19	38	100	21	31	26	0,360
CP25-20150	25	38	150		43	44	0,750
CP25-20200	25	50	200		55	65	1,500
CP25-24150	32	50	150	26	43	38	1,290
CP25-24200	32	50	200		53	57	2,000
CP25-24250	38	50	250		60	64	2,950