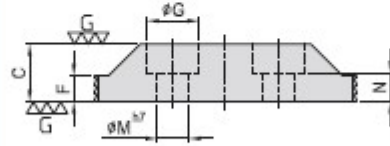
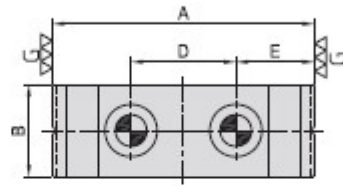


# CP30

## THIN BLOCK STOP



- Material / Finish :  
Material : S45C  
• Heat treated : HRC 32°-38°  
• Surface finish : Black Oxide.  
• Application : used with CP13.

MODEL NO.	A	B	C	D	E	F	G	M	N	kg	TYPE
CP30-12100-S	100	35	22	40	30	10	20	12	11	0,46	Serrated
CP30-16130-S	130	40	30	50	40	14	26	16	14	0,88	
CP30-12100-G	100	35	22	40	30	10	20	12	11	0,46	Ground
CP30-16130-G	130	40	30	50	40	14	26	16	14	0,88	