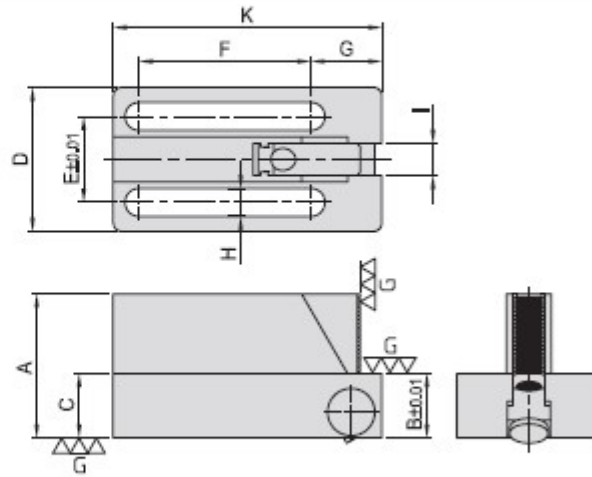


CP33**CLAMPING PARTS**

MODEL NO.	A	B	C	D	E	F	G	H	I	K	kg
CP33-1240				67	40	80	33,0	13,0		125	2,02
CP33-1250	67	30	30	77	50	85	33,0	13,0	15	130	2,45
CP33-1650				77	50	85	34,5	16,5		130	2,25