



NC ROTARY
TABLE

NC Rotary Table

MR series MR120·MR160·MR200

Industry standard compact rotary table

- Minimum size in its class
 - Pneumatic spec
 - Powerful pneumatic clamping torque by triple disk brake system
 - High speed rotation
 - High accuracy
 - Rotary Joint built in as option
 - Ideal for compact machining centres
- * CE correspondence



MR160

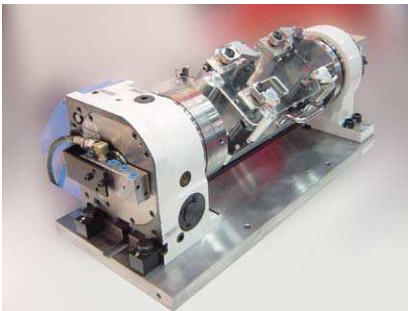


MR160R (L) V
(With Kitagawa own controller)



MR160R (L) V
(Rotary Joint built in as option)

Sample Application



▲ Various trunnion systems available.
(See P.95).



▲ Table with T-slot can also be offered.



▲ Only Kitagawa can offer this combination of NC Rotary Table and chuck

4th axis specifications				M signal specification			
MR 160	L A * * *			MR 160	R A V * *		
Type	Table Size 120·160·200	Right/left hands R: Right hand L: Left hand	Design No. Motor type Clamping method Only Pneumatic	Type	Table Size 120·160·200	R : Right hand L : Left hand	Design No. Quinte specification Clamping method Pneumatic

Specifications

Model		MR120	MR160	MR200
Right hand		○	○	○
Left hand		○	○	○
Table dia (mm)		φ 128	φ 165	φ 202
Register diameter on Face Plate (mm)		φ 50H7	φ 50H7	φ 65H7
Spindle through hole diameter (mm)		φ 32	φ 40	φ 45
Centre Height (mm)		120	140	140
Clamping method		Pneumatic	Pneumatic	Pneumatic
Clamping torque (N·m) (In pneumatic 0.5MPa)		150	310	350
Motor axis reduced inertia (kg·m ²)		0.00004	0.00008	0.00017
Servomotor (for FANUC specification)		α iF 2/5000	α iF 2/5000	α iF 4/5000
Gear ratio		1/60	1/72	1/90
Max. spinde speed	FANUC specification (for min ⁻¹ /motor3000min ⁻¹)	50	41.6	33.3
	M signal specification (for min ⁻¹ /motor3000min ⁻¹)	50	41.6	33.3
Allowable work inertia (kg·m ²)		0.22	0.51	1.00
Indexing accuracy (sec)		20	20	20
Repeatability (sec)		4	4	4
Mass of product (kg)		33	41	61
Manual Tailstock (as an option · P89 reference)		MR120RN	MR160RN	MR200RN
Tail Spindle (as an option · P93 reference)		TSR121A	MSR142A	MSR142A
Rotary Joint (as an option · P97 reference)		RJ32-12Q04 Hydraulic/Pneumatic3-port	RJ40H16Q Hydraulic/Pneumatic4-port	RJ40H20Q02 Hydraulic/Pneumatic4-port
Allowable Load	Horizontal (kg)	120	160	200
	Vertical (kg)	60	80	100
Allowable load (When clamped to table)	F (kN)	8	10	17
	F×L (N·m)	350	600	1100
	F×L (N·m)	150	310	350
Allowable cutting torque	T (N·m)	180	220	270

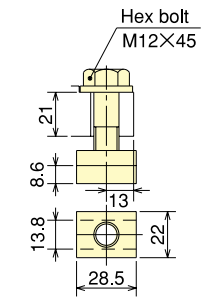
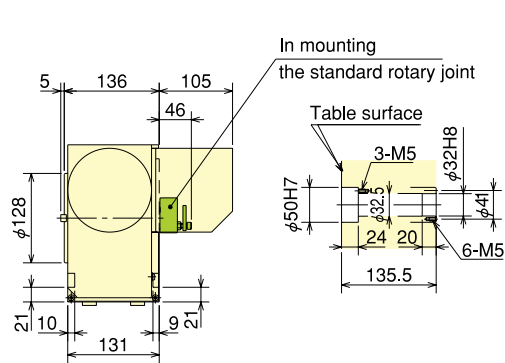
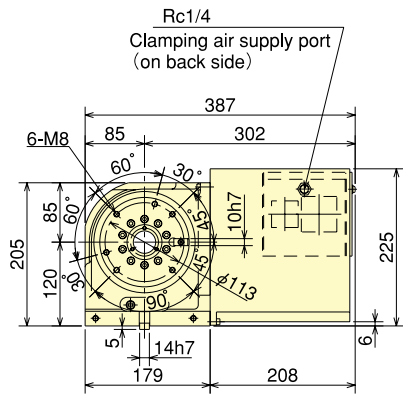
Note) 1. The switch for pressure checking is incorporated to all series except TC/DM of NC tables. 2. The solenoid valve for the table clamp is incorporated. 3. Neither cable nor hose is fitted between NC rotary table and machine tool... 4. In the port part on the table surface jig side of a rotary joint, MR120 or 200 is fixed to the rotary table side and MR160 to jig side. 5. Because a mounting pitch varies with the machines, refer to the pitch of the table spindle size drawing on P93. 6. Each product mass is determined by a Kitagawa M signal spec.



MR series MR120·MR160·MR200

■Dimensions [4th axis specifications]

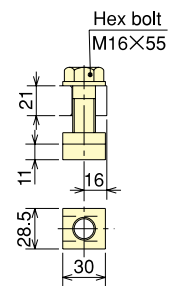
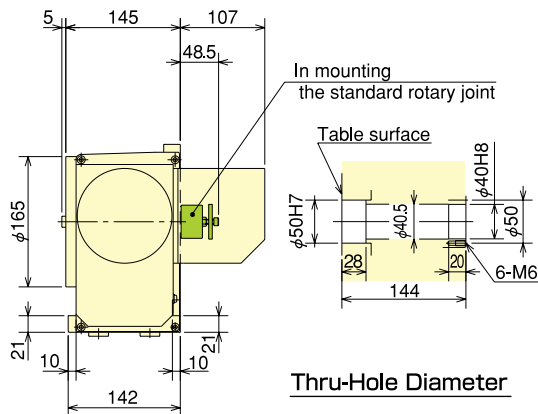
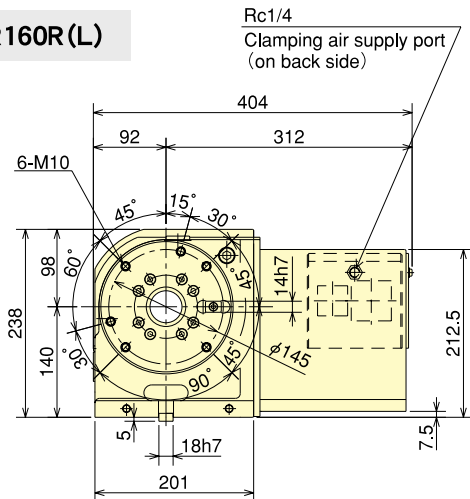
MR120R(L)



Thru-Hole Diameter

Clamping Device

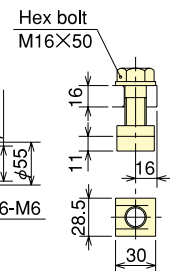
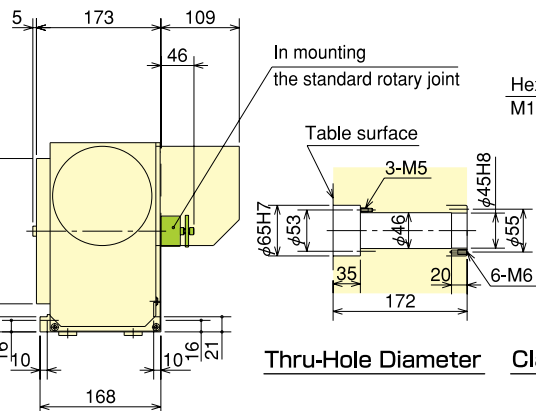
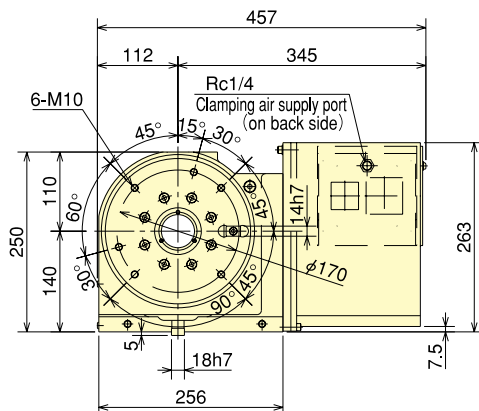
MR160R(L)



Thru-Hole Diameter

Clamping Device

MR200R(L)



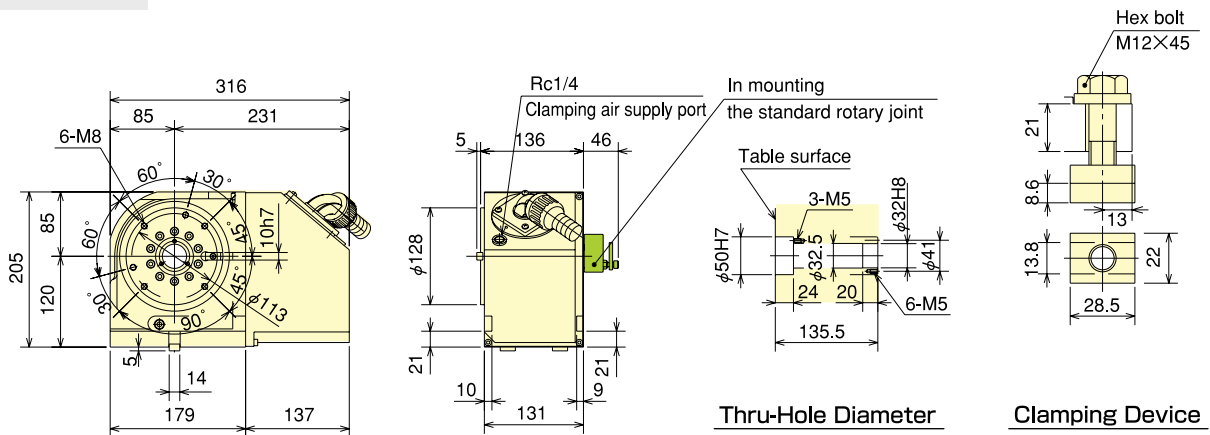
Thru-Hole Diameter

Clamping Device

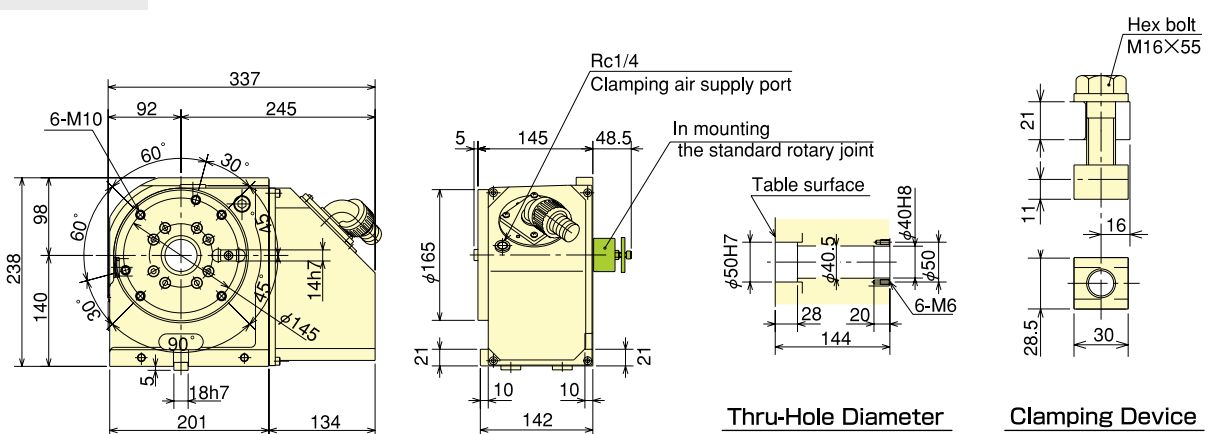
*The above dimensions are the same as FANUC specifications.
Those dimensions may vary from motor to motor that is mounted.
R is a right hand spec, and L is a left hand spec.

■Dimensions [Kitagawa own controller] *The dimensions may vary from motor to motor that is mounted.

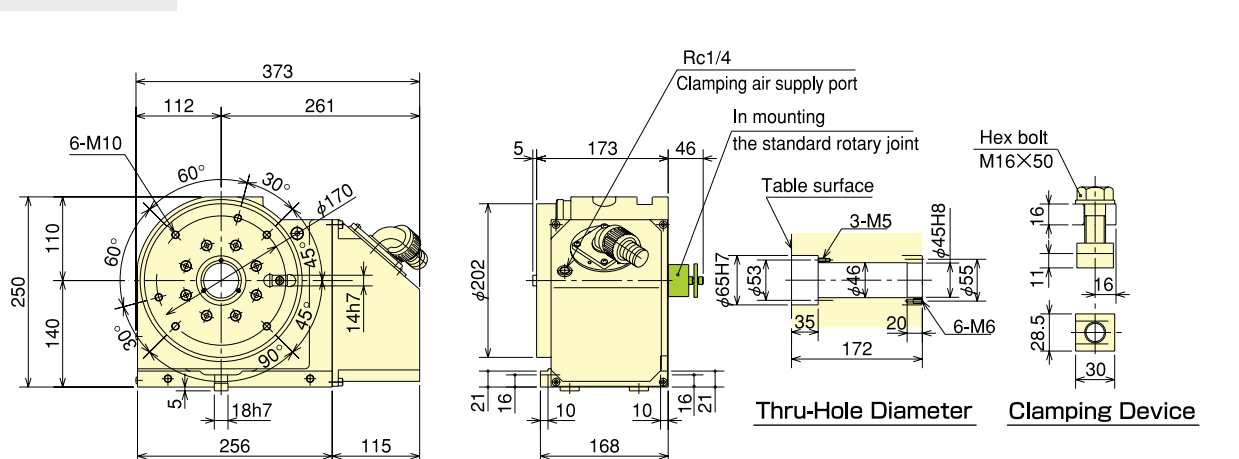
MR120R(L)



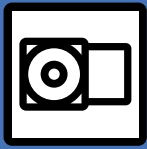
MR160R(L)



MR200R(L)



※R is a right hand spec. and L is a left hand spec.



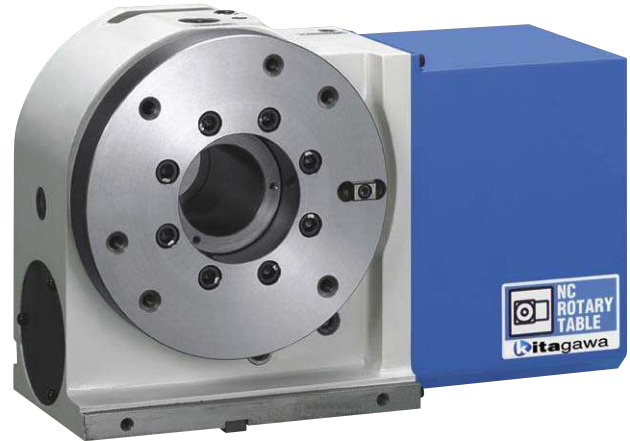
NC ROTARY
TABLE

NC Rotary Table

MR series MR250·MR320

Industry standard compact rotary table

- Compact design
 - Pneumatic spec
 - Powerful pneumatic clamping torque by triple disk brake system
 - High speed rotation
 - High accuracy
 - Rotary Joint built in as option
 - Ideal for compact machining centres
- * CE correspondence

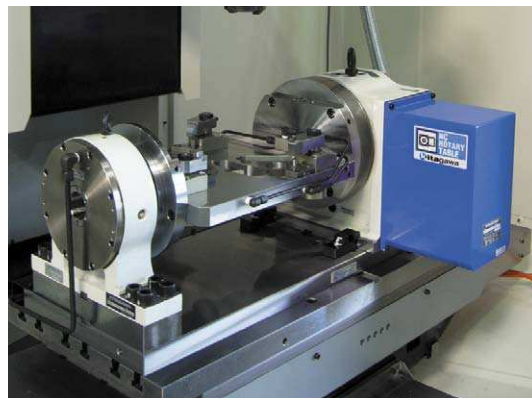


MR250



MRM250
(With Kitagawa own controller)


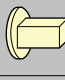
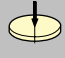
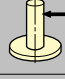
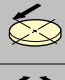
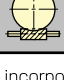
Sample Application



▲ Specialist trunnion systems allow for multi surface or simultaneous machining.

4th axis specifications				M signal specification			
MR 250	L	A	***	MR 250	R	A	V***
Type	Table Size 250·320	Design No.		Type	Table Size 250·320	Design No.	
		Motor type Clamping method Only Pneumatic				Quinte specification Clamping method Pneumatic	
		Right/left hands R: Right hand L: Left hand				R : Right hand L : Left hand	

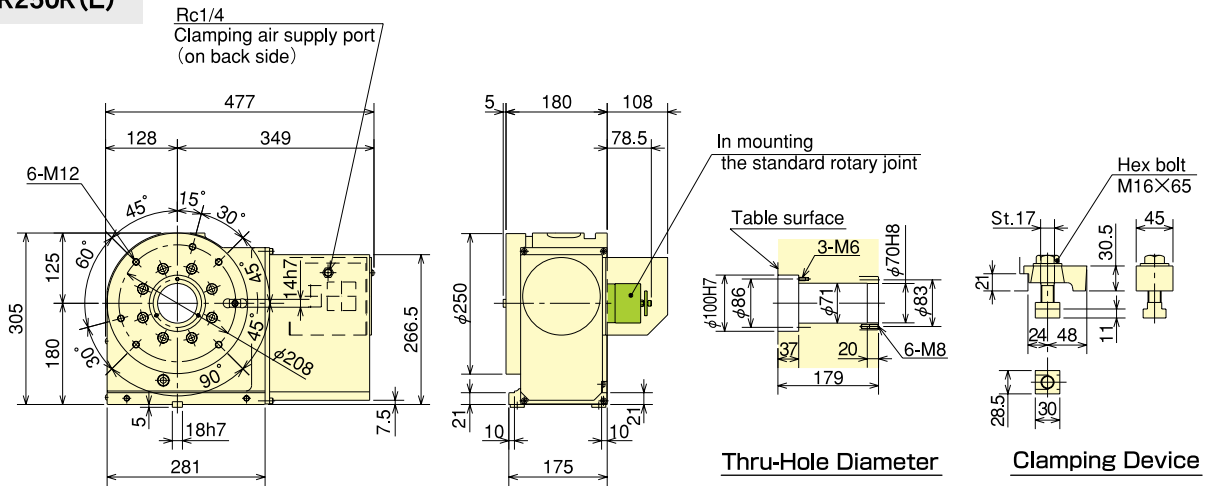
Specifications

Model		MR250	MR320
Right hand		○	○
Left hand		○	○
Table dia (mm)		φ 250	φ 320
Register diameter on Face Plate (mm)		φ 100H7	φ 130H7
Spindle through hole diameter (mm)		φ 70	φ 105
Centre Height (mm)		180	225
Clamping method		Pneumatic	Pneumatic
Clamping torque (N·m) (In pneumatic 0.5MPa)		600	1200
Motor axis reduced inertia (kg·m ²)		0.00031	0.00031
Servomotor (for FANUC specification)		α iF 4/5000	α iF 8/3000
Gear ratio		1/90	1/120
Max. spindle speed	FANUC specification (for min ⁻¹ /motor3000min ⁻¹)	33.3	25
	M signal specification	33.3(3000min ⁻¹)	16.6(2000min ⁻¹)
Allowable work inertia (kg·m ²)		1.95	4.49
Indexing accuracy (sec)		20	20
Repeatability (sec)		4	4
Mass of product (kg)		85	135
Manual Tailstock (as an option · P89 reference)		MR250RN	MR320RN
Tail Spindle (as an option · P93 reference)		TSR181A	TSR181A-45
Rotary Joint (as an option · P97 reference)		RJ70H25Q02 Hydraulic/Pneumatic6-port	RJ70H32Q01 Hydraulic/Pneumatic6-port
Allowable Load	Horizontal (kg) 	250	350
	Vertical (kg) 	125	180
Allowable load (When clamped to table)	F (kN) 	21	25
	FXL (N·m) 	1600	2400
	FXL (N·m) 	600	1200
Allowable cutting torque	T (N·m) 	480	800

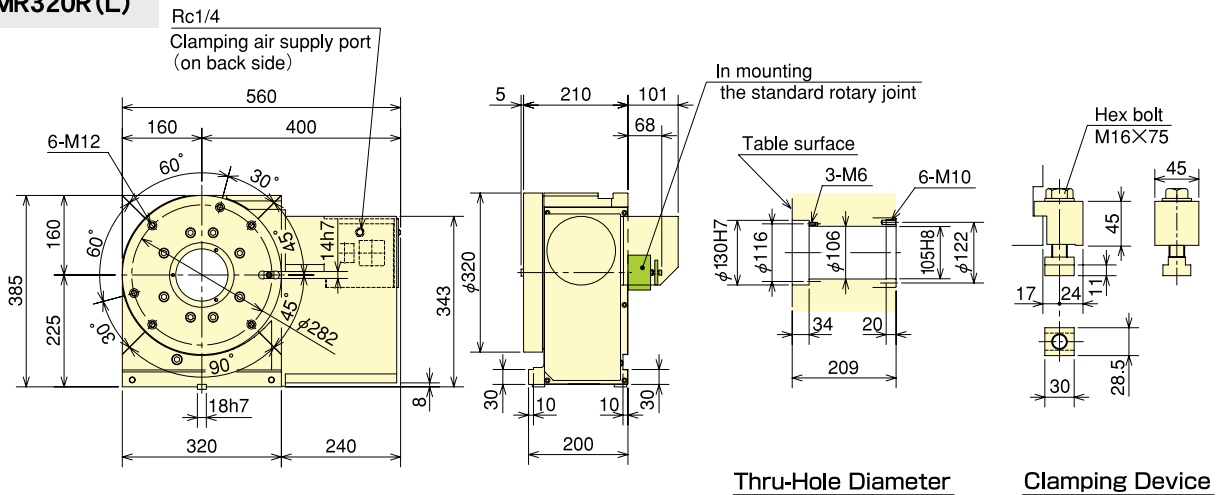
Note) 1. The switch for pressure checking is incorporated to all series except TC/DM of NC tables. 2. The solenoid valve for the table clamp is incorporated. 3. Neither cable nor hose is fitted between NC rotary table and machine tool... 4. In the port part on the table surface jig side of a rotary joint, MR120 or 320 is fixed to the rotary table side. 5. Because a mounting pitch varies with the machines, refer to the pitch of the table spindle size drawing on P93. 6. Each product mass is determined by a Kitagawa M signal spec.

■Dimensions [4th axis specifications]

MR250R(L)



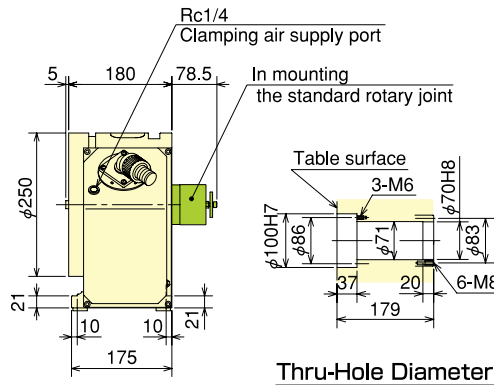
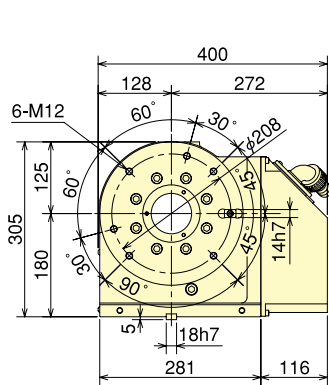
MR320R(L)



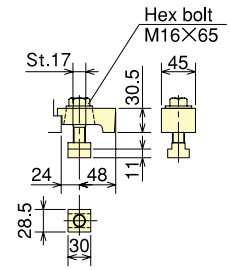
※The above dimensions are the same as FANUC specifications.
Those dimensions may vary from motor to motor that is mounted.
R is a right hand spec. and L is a left hand spec.

■ **Dimensions [Kitagawa own controller]** *The dimensions may vary from motor to motor that is mounted.

MR250R(L)

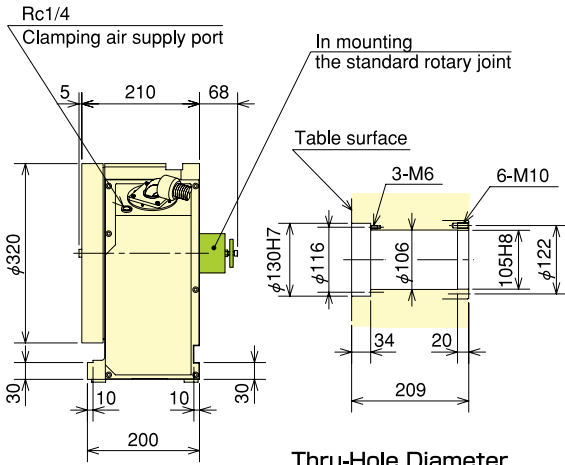
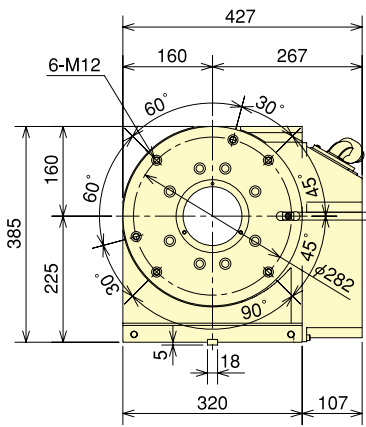


Thru-Hole Diameter

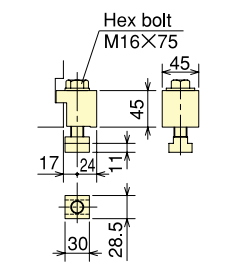


Clamping Device

MR320R(L)



Thru-Hole Diameter



Clamping Device

※R is a right hand spec. and L is a left hand spec.