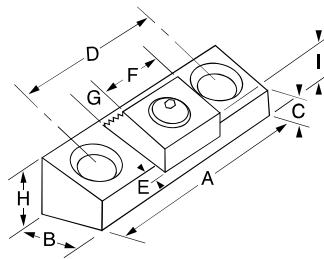


Compact Toe Clamps



This cam action fixture clamp provides positive down force while using very little space on a fixture. Workpieces can be clamped in series by using the back surface of a clamp to locate the next workpiece. The hardened steel clamping element has both a smooth surface for machined workpieces and a serrated clamping surface for rougher work. The height of the clamp can be adjusted by milling the slot deeper in the fixture plate.



Part Number	A	B	C	D	E†	F	G	H	I*	Total Distance of Movement	Mounting Screws (Included)	Max. Torque (Ft/Lbs)	Holding Force (Lbs)	Replacement-Cam Screw	Replacement-Square Washer
INCH															
24106	1.70	.75	.50	1.00	.090	.75	.25	.62	.845	.050	5/16-18x3/4 LHCS	20.8	2,000	10370	21006
24108	2.12	1.00	.45	1.32	.110	1.00	.38	.62	.960	.100	3/8-16x3/4 LHCS	65.0	4,000	10372	21016
24110	2.95	1.50	.99	2.00	.130	1.50	.50	1.25	1.70	.100	1/2-13x1 1/4 SHCS	100.0	6,000	10376	21026
													(N.m.)	(N.)	
METRIC															
54110	43.2	19.0	12.7	25.4	2.3	19.0	6.4	15.75	21.5	1.6	M8x16 LHCS	28.20	8900	50368	21006
54112	54.0	25.4	11.4	33.5	2.8	25.4	9.7	15.75	24.4	2.0	M10x20 LHCS	88.13	17800	50372	51016
54116	75.0	38.1	25.2	50.8	3.3	38.1	12.7	31.75	43.2	2.5	M12x30 SHCS	135.58	26700	50374	21026

E† - The distance needed between the front of the clamp base and the workpiece. I* - The distance from the top of the washer to the bottom of the clamp body. Drill and tap the centerline of "B" for mounting holes.

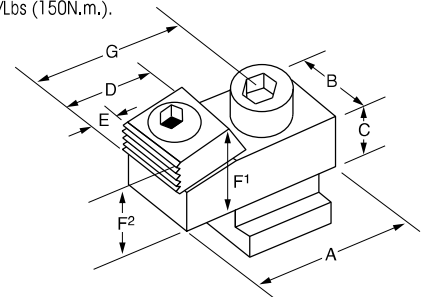
T-Slot Toe Clamps



This clamp is like the Compact Toe Clamp, only it is designed to be used in the T-slots of machine tables. It provides 4,000 lbs. (17800 N) positive down force while maintaining a low profile. The hardened steel clamping element has both a smooth surface for machined workpieces and a serrated clamping surface for rougher work.

	A	B	C	D	E	F1	F2	G (Neutral Position)	Max. Torque/Holding Force
INCH	1.94	1.12	.62	1.00	.38	1.00	.875	1.48	65/4,000 (Ft Lbs/Lbs)
METRIC	50	28.5	15.7	25.4	9.6	25.4	22.2	37.59	88.00/17800 (N.m./N.)

F1 - The distance from the top of the back of the washer to the bottom of the clamp body. F2 - The distance from the top of the front of the washer to the bottom of the clamp body. Torque mounting bolt to 110 Ft/Lbs (150N.m.).



Part Number	T-slot Size
INCH	
24000	No T-nut or Mtg. Screw
24128	9/16
24148	5/8
24168	1 1/16
24188	3/4
METRIC	
54000	No T-nut or Mtg. Screw
54014	14
54016	16
54018	18

Replacement	
Cam Screw	Square Washer
INCH	10372 21016
METRIC	50372 51016

