



CHUCK

Large Power Chuck for Vertical Lathes

NV series

Low maintenance Power Chuck for Vertical Lathes Sealed Base Jaw to prevent Swarf and Coolant ingress



- Protection against Swarf and Coolant
Protector and Scraper at Base Jaw prevent Swarf and Coolant ingress.

- Standard Jaw
NV series is compatible with standard Hard and Soft Jaws as sealing is at the Base Jaw.

*CE correspondence

Dimensional Drawings

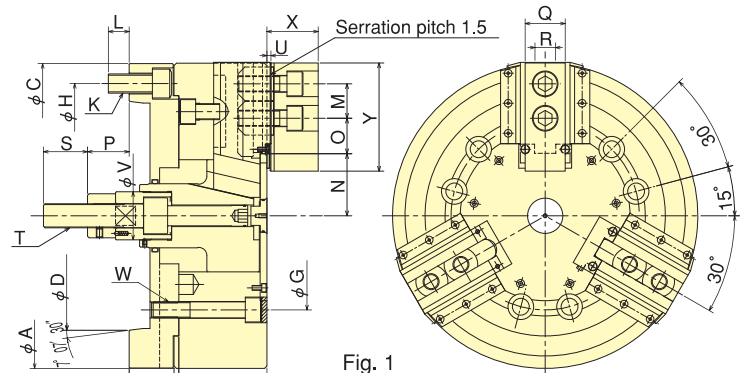


Fig. 1

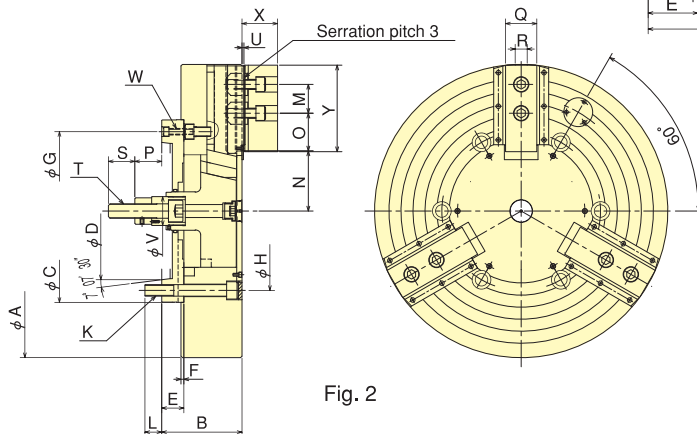
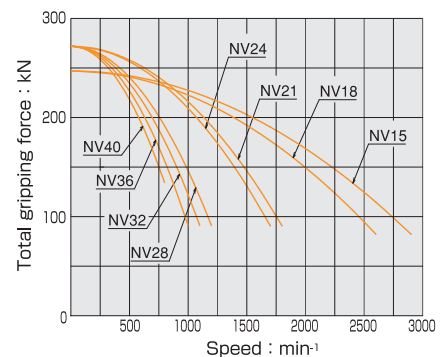


Fig. 2

Gripping Characteristic Graphs

※With standard blank soft top jaw.



Dimensions

※NV15&18 are based on Fig.1. NV21~40 are based on Fig.2.

Model	A	B	C	D	E	F	G	H	K	L	M	N max.	N min.	O max.	O min.	P max.	P min.	Q	R	S	T	U	V	W	X	Y
NV15C15	381	172	380	285.775	62	6	235.0	330.2	6-M24	26	43	77.5	69.5	48.75	23.25	91	56	50	25.5	55	M30	5	60	6-M20	64	135
NV18C15	450	172	380	285.775	62	6	235.0	330.2	6-M24	26	43	108	100	48.75	23.25	91	56	50	25.5	55	M30	5	60	6-M20	64	135
NV21C15	530	167	380	285.775	46	6	330.2	330.2	6-M24	35	60	86	78	93.5	27.5	91	56	65	25.0	55	M30	6	60	3-M12	74	180
NV24C15	610	167	380	285.775	46	6	330.2	330.2	6-M24	29	60	125	117	93.5	27.5	91	56	65	25.0	55	M30	6	60	3-M12	74	180
NV28C15	700	167	380	285.775	46	6	330.2	330.2	6-M24	29	60	125	117	141.5	27.5	91	56	65	25.0	55	M30	6	60	3-M12	74	180
NV32C15	800	167	380	285.775	46	6	330.2	330.2	6-M24	29	60	125	117	189.5	27.5	91	56	65	25.0	55	M30	6	60	3-M12	74	180
NV36C15	914	167	380	285.775	46	6	330.2	330.2	6-M24	29	60	125	117	249.5	27.5	91	56	65	25.0	55	M30	6	60	3-M12	74	180
NV40C15	1000	167	380	285.775	46	6	330.2	330.2	6-M24	29	60	125	117	282.5	27.5	91	56	65	25.0	55	M30	6	60	3-M12	74	180

※The above dimensions are for mounting back plate of 15-nose. The back plate of 11-nose can also be mounted.

Specifications

Model	Gripping range mm Max. Min.	Jaw Stroke (diameter) mm	Plunger Stroke mm	Max. Draw Bar Pull Force kN (kgf)	Max. Gripping Force kN (kgf)	Max. Speed min ⁻¹	Net Weight with Soft top jaws kg	Moment of inertia kg·m ²	Matching Cylinder	Max. pressure MPa (kgf/cm ²)	Matching Soft top jaw	Spindle nose size
NV15C15	381 72	16	35	82 (8362)	247 (25187)	2900	139	2.7	Y2035R	3.2 (32.6)	SB15N1	A ₂ -15
NV18C15	450 133	16	35	82 (8362)	247 (25187)	2600	166	4.1	Y2035R	3.2 (32.6)	SB15N1	A ₂ -15
NV21C15	530 62	16	35	82 (8362)	272 (27736)	1800	227	7.6	Y2035R	3.2 (32.6)	SB18A2	A ₂ -15
NV24C15	610 152	16	35	82 (8362)	272 (27736)	1700	282	12.8	Y2035R	3.2 (32.6)	SB18A2	A ₂ -15
NV28C15	700 152	16	35	82 (8362)	272 (27736)	1200	360	21.9	Y2035R	3.2 (32.6)	SB18A2	A ₂ -15
NV32C15	800 152	16	35	82 (8362)	272 (27736)	1100	472	37.2	Y2035R	3.2 (32.6)	SB18A2	A ₂ -15
NV36C15	914 152	16	35	82 (8362)	272 (27736)	1000	594	62.4	Y2035R	3.2 (32.6)	SB18A2	A ₂ -15
NV40C15	1000 152	16	35	82 (8362)	272 (27736)	800	738	91.5	Y2035R	3.2 (32.6)	SB18A2	A ₂ -15

※The above specifications are for mounting back plate of 15-nose. The back plate of 11-nose can also be mounted.