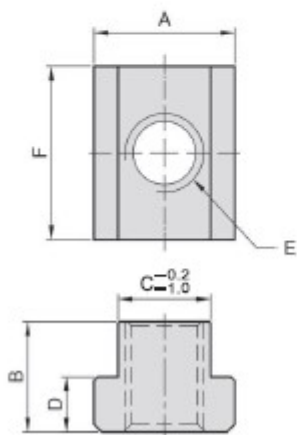


PT06**T-SLOT NUT**

- ◆ Material : S45C(JIS) / CK45(DIN)
- ◆ Heat treated : HRC 30°~35°
- ◆ Surface finish : Black Oxide.



MODEL NO.	A	B	C	D	E	F	kg
PT06-1008	15.0	13.0	10.0	6.0	M 8	22	0.020
PT06-1210	18.0	14.0	12.0	7.0	M10		0.022
PT06-1410	22.0	16.0	14.0	8.0	M10	28	0.050
PT06-1412					M12		0.048
PT06-1612					M12	28	0.060
PT06-1614	25.0	16.0	16.0	8.0	M14		0.057
PT06-1810					M10	30	0.090
PT06-1812	28.0	20.0	18.0	10.5	M12		
PT06-1814					M14	30	0.090
PT06-1816	28.0	20.0		10.5	M16		0.085
PT06-2018	32.0	19.0	20.0	11.9	M18	30	0.098
PT06-2018	32.0	25.0		14.0	M18	38	0.110
PT06-2218					M18	38	0.178
PT06-2220	36.0	25.0	22.0	14.0	M20		0.190
PT06-2418					M18	38	0.184
PT06-2420	38.0	25.0	24.0	14.0	M20		0.250
PT06-2620					M20	44	0.250
PT06-2622	41.3	25.0	26.0	15.8	M22		0.240
PT06-2822					M22	50	0.330
PT06-2824	44.0	28.5	28.0	17.5	M24		0.312