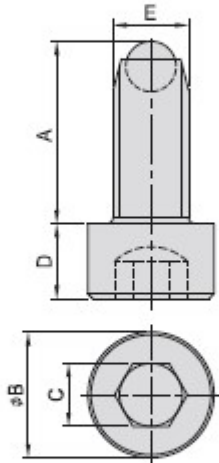


PT17A ROUND END



- Material :
Bolt : SCM21(JIS) / 34CrMo4(DIN)
Ball : SUJ2(JIS) / 100Cr6(DIN)
- Heat treated :
Bolt : HRC 28°-32°
Ball : HRC 62°
- Surface finish : Black Oxide.
- Application : Support or clamp the work piece.
- Features : Available with : Flat end, round end, serrated end, less chance of deforming the work piece due the rounded tip.

SWIVEL SHOULDER CLAMPING SCREW

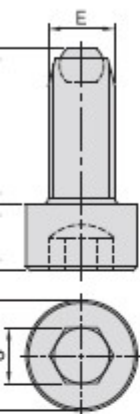
| MODEL NO. | A | B | C | D | E | max (KN) | g |
|-------------|-------|----|----|----|-----|----------|-------|
| PT17A-0615 | 14.5 | | | | | | 5.3 |
| PT17A-0625 | 23.5 | 10 | 5 | 6 | M 6 | 9 | 7.4 |
| PT17A-0635 | 33.5 | | | | | | 9.5 |
| PT17A-0820 | 18.7 | | | | | | 13.5 |
| PT17A-0830 | 28.7 | 13 | 6 | 8 | M 8 | 15 | 20.0 |
| PT17A-0840 | 38.7 | | | | | | 24.0 |
| PT17A-0850 | 50.7 | | | | | | 30.0 |
| PT17A-1025 | 25.0 | | | | | | 26.0 |
| PT17A-1040 | 40.0 | 16 | 8 | 10 | M10 | 20 | 34.0 |
| PT17A-1060 | 60.0 | | | | | | 46.0 |
| PT17A-1230 | 31.2 | 18 | 10 | 12 | M12 | 30 | 40.0 |
| PT17A-1245 | 46.2 | | | | | | 50.0 |
| PT17A-1265 | 66.2 | | | | | | 70.0 |
| PT17A-1280 | 81.2 | | | | | | 83.0 |
| PT17A-1640 | 40.6 | 24 | 14 | 16 | M16 | 60 | 90.0 |
| PT17A-1650 | 50.6 | | | | | | 110.0 |
| PT17A-1665 | 65.6 | | | | | | 130.0 |
| PT17A-1690 | 90.6 | | | | | | 170.0 |
| PT17A-20050 | 52.0 | 30 | 17 | 20 | M20 | 90 | 185.1 |
| PT17A-20080 | 82.0 | | | | | | 256.4 |
| PT17A-20100 | 102.0 | | | | | | 301.2 |
| PT17A-24060 | 62.0 | 36 | 19 | 24 | M24 | 120 | 324.8 |
| PT17A-24090 | 92.0 | | | | | | 283.5 |
| PT17A-24120 | 122.0 | | | | | | 351.0 |

PT17B FLAT END



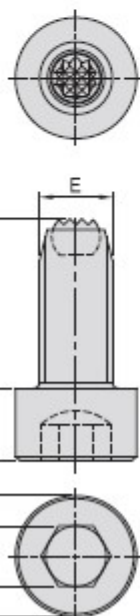
PT17C SERRATED





| MODEL NO. | A | B | C | D | E | max (KN) | g |
|-------------|-----|----|----|----|-----|----------|-------|
| PT17B-0615 | 14 | | | | | | 5.3 |
| PT17B-0625 | 23 | 10 | 5 | 6 | M 6 | 9 | 7.4 |
| PT17B-0635 | 33 | | | | | | 9.5 |
| PT17B-0820 | 18 | | | | | | 13.5 |
| PT17B-0830 | 28 | 13 | 6 | 8 | M 8 | 15 | 20.0 |
| PT17B-0840 | 38 | | | | | | 24.0 |
| PT17B-0850 | 50 | | | | | | 30.0 |
| PT17B-1025 | 24 | 16 | 8 | 10 | M10 | 20 | 26.0 |
| PT17B-1040 | 39 | | | | | | 34.0 |
| PT17B-1060 | 59 | | | | | | 46.0 |
| PT17B-1230 | 30 | | | | | | 40.0 |
| PT17B-1245 | 45 | 18 | 10 | 12 | M12 | 30 | 50.0 |
| PT17B-1265 | 65 | | | | | | 70.0 |
| PT17B-1280 | 80 | | | | | | 83.0 |
| PT17B-1640 | 39 | | | | | | 90.0 |
| PT17B-1650 | 49 | 24 | 14 | 16 | M16 | 60 | 110.0 |
| PT17B-1665 | 64 | | | | | | 130.0 |
| PT17B-1690 | 89 | | | | | | 170.0 |
| PT17B-20050 | 50 | | | | | | 185.1 |
| PT17B-20080 | 80 | 30 | 17 | 20 | M20 | 90 | 256.4 |
| PT17B-20100 | 100 | | | | | | 301.2 |
| PT17B-24060 | 60 | | | | | | 324.8 |
| PT17B-24090 | 90 | 36 | 19 | 24 | M24 | 120 | 283.5 |
| PT17B-24120 | 120 | | | | | | 351.0 |

D END



| MODEL NO. | A | B | C | D | E | max (KN) | g |
|-------------|-----|----|----|----|-----|----------|-------|
| PT17C-0615 | 14 | | | | | | 5.3 |
| PT17C-0625 | 23 | 10 | 5 | 6 | M 6 | 9 | 7.4 |
| PT17C-0635 | 33 | | | | | | 9.5 |
| PT17C-0820 | 18 | | | | | | 13.5 |
| PT17C-0830 | 28 | 13 | 6 | 8 | M 8 | 15 | 20.0 |
| PT17C-0840 | 38 | | | | | | 24.0 |
| PT17C-0850 | 50 | | | | | | 30.0 |
| PT17C-1025 | 24 | 16 | 8 | 10 | M10 | 20 | 26.0 |
| PT17C-1040 | 39 | | | | | | 34.0 |
| PT17C-1060 | 59 | | | | | | 46.0 |
| PT17C-1230 | 30 | | | | | | 40.0 |
| PT17C-1245 | 45 | 18 | 10 | 12 | M12 | 30 | 50.0 |
| PT17C-1265 | 65 | | | | | | 70.0 |
| PT17C-1280 | 80 | | | | | | 83.0 |
| PT17C-1640 | 39 | | | | | | 90.0 |
| PT17C-1650 | 49 | 24 | 14 | 16 | M16 | 60 | 110.0 |
| PT17C-1665 | 64 | | | | | | 130.0 |
| PT17C-1690 | 89 | | | | | | 170.0 |
| PT17C-20050 | 50 | | | | | | 185.1 |
| PT17C-20080 | 80 | 30 | 17 | 20 | M20 | 90 | 256.4 |
| PT17C-20100 | 100 | | | | | | 301.2 |
| PT17C-24060 | 60 | | | | | | 324.8 |
| PT17C-24090 | 90 | 36 | 19 | 24 | M24 | 120 | 283.5 |
| PT17C-24120 | 120 | | | | | | 351.0 |