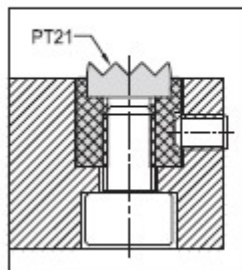
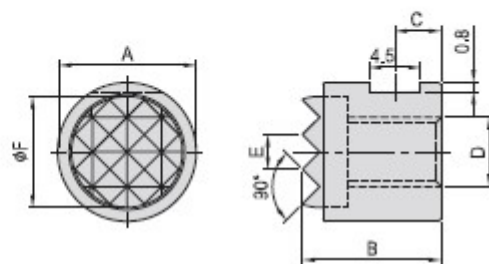


PT21**GRIPPER PAD(ROUND)**

- Material : S45C(JIS)/Ck45(DIN)
- Heat treated : HRC 33°
- Surface finish : Black Oxide.
- Application : Multipurpose work support and clamping unit, ideal for rough parts.



MODEL NO.	A	B	C	D	E	F	kg
PT21-1010	10	10,0	3,4	M5	2,3	8,1	0,005
PT21-1212	12	12,0	4,0	M6	3,0	9,6	0,008
PT21-1612	16	12,0	4,0	M6	3,0	13,0	0,016
PT21-2012	20	12,0	4,0	M6	3,0	16,3	0,025
PT21-2512	25	12,0	4,0	M6	3,0	19,5	0,040

Tooth plate

- Material : SKH9(JIS)
S18-1-2-5(DIN)
- Heat treated : HRC 60°

MODEL NO.	A	B	C	D	E	F	kg
PT21-1010-K	10	10,0	3,4	M5	2,3	8,1	0,005
PT21-1212-K	12	12,0	4,0	M6	3,0	9,6	0,008
PT21-1612-K	16	12,0	4,0	M6	3,0	13,0	0,016
PT21-2012-K	20	12,0	4,0	M6	3,0	16,3	0,025
PT21-2512-K	25	12,0	4,0	M6	3,0	19,5	0,040

Tooth plate

- Material : extremely hard