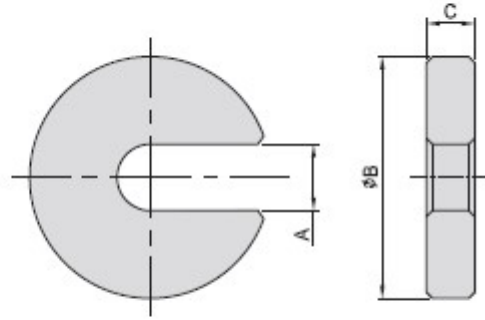


# PT23

## "C" WASHER



- ◊ Material : S45C(JIS)/CK45(DIN)
- ◊ Heat treated : HRC 40°
- ◊ Surface finish : Black Oxide.
- ◊ Application : Use where quick assembly is important.
- ◊ Features : Washer that slides in and out Of position for clean loading.

| MODEL NO. | A  | B  | C  | kg    |
|-----------|----|----|----|-------|
| PT23-0835 | 9  | 35 | 8  | 0,066 |
| PT23-1040 | 11 | 40 |    | 0,066 |
| PT23-1255 | 13 | 55 | 10 | 0,150 |
| PT23-1665 | 17 | 65 |    | 0,200 |
| PT23-2080 | 21 | 80 | 10 | 0,300 |
| PT23-2490 | 25 | 90 | 12 | 0,470 |