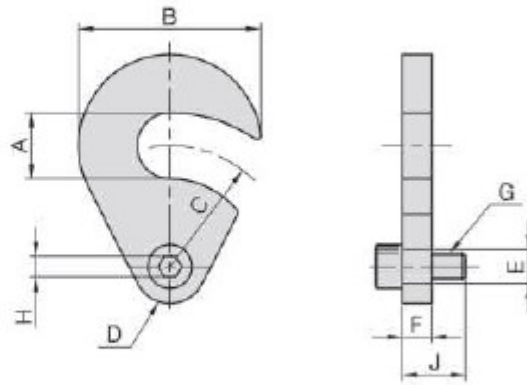


PT24

SWING "C" WASHER



- Material : 4140(JIS)/CK45(DIN)
- Heat treated : HRC 40°
- Surface finish : Black Oxide.
- Application : C washer that swings out of the way for clean loading. Can be reversed to swing into position either clockwise or counter-clockwise.

MODEL NO.	A	B	C	D	E	F	G	H	J	kg
PT24-0632	11,0	32	24	16	8	6	M6	8	15	0,050
PT24-0840	13,5	40	27	20	10	8	M8	10	20	0,090
PT24-0850	18,0	50	33	20	10	8	M8	10	20	0,130