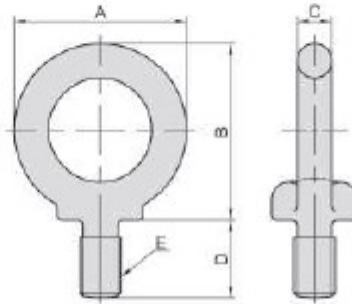


PT30**LIFTING EYEBOLT**

MODEL NO.	A	B	C	D	E	Load kg	kg
PT30-08	32,6	33,3	6,3	15	M 8	90	0,032
PT30-10	41,0	41,5	8,0	18	M10	150	0,063
PT30-12	50,0	51,0	10,0	22	M12	220	0,125
PT30-16	60,0	60,0	12,5	27	M16	450	0,216
PT30-20	72,0	71,0	16,0	30	M20	630	0,400
PT30-24	90,0	90,0	20,0	38	M24	950	0,830
PT30-30	110,0	110,0	25,0	45	M30	1500	1,500
PT30-36	133,0	131,5	31,5	55	M36	2300	2,900
PT30-42	151,0	150,5	35,5	65	M42	3400	4,400