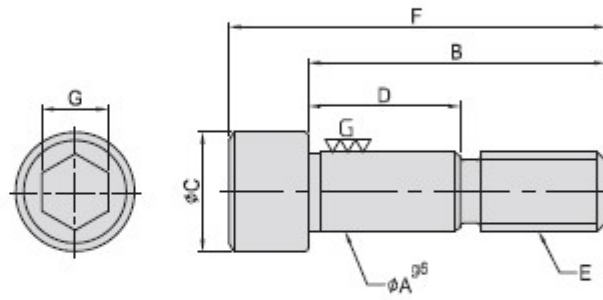


SHOULDER BOLT



- Material : SCM435(JIS)/34CrMo4(DIN)
- Heat treated : HRC 32~38°
- Application : Position & fasten this accurately ground bolt.

MODEL NO.	A	B	C	D	E	F	G	kg
PT31-1245		45		23		57		0,053
PT31-1255		55		33		67	10	0,060
PT31-1265	12	65	18	43	M12	77		0,070
PT31-1275		75		53		87		0,078
PT31-1655		55		28		72		0,120
PT31-1665		65		40		82	14	0,140
PT31-1675	16	75	24	50	M16	92		0,150
PT31-1688		88		68		105		0,165