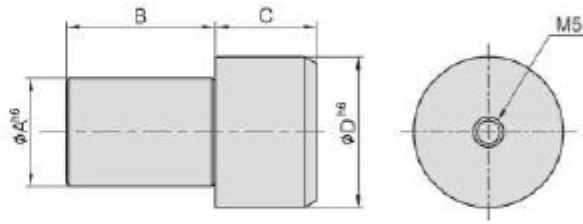


**PT32****SHOULDER DOWEL PIN**G  
▽▽▽

- Material : SCM435(JIS)34CrMo4(DIN)
- Heat treated : HRC 55°
- Application : Multifunction Positioning.

| MODEL NO.   | A  | B  | C  | D  | kg    |
|-------------|----|----|----|----|-------|
| PT32-081225 | 8  | 13 | 12 | 12 | 0,012 |
| PT32-121632 | 12 | 18 | 14 | 16 | 0,032 |
| PT32-142037 | 14 | 22 | 15 | 20 | 0,052 |
| PT32-162239 | 16 | 22 | 17 | 22 | 0,072 |
| PT32-182542 | 18 | 25 | 17 | 25 | 0,098 |