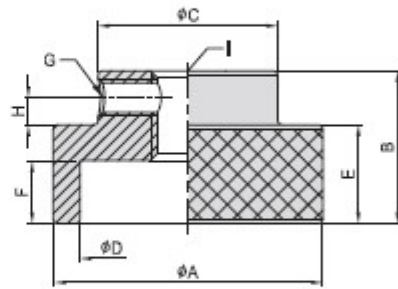


PT33**KNURLED NUT**

- Material : S45C(JIS)CK45(DIN)
- Heat treated : HRC 32°~38°
- Surface finish : Black Oxide
- Application : Used where quick hand assembly is needed.

| MODEL NO. | A | B | C | D | E | F | G | H | I | kg |
|-----------|----|----|----|----|----|----|----|---|-----|------|
| PT33-0830 | 30 | 17 | 20 | 24 | 11 | 7 | M4 | 3 | M8 | 0.05 |
| PT33-1035 | 35 | 20 | 28 | 30 | 13 | 8 | M4 | 4 | M10 | 0.09 |
| PT33-1240 | 40 | 24 | 32 | 34 | 15 | 10 | M5 | 4 | M12 | 0.12 |
| PT33-1645 | 45 | 30 | 35 | 38 | 18 | 12 | M6 | 5 | M16 | 0.18 |