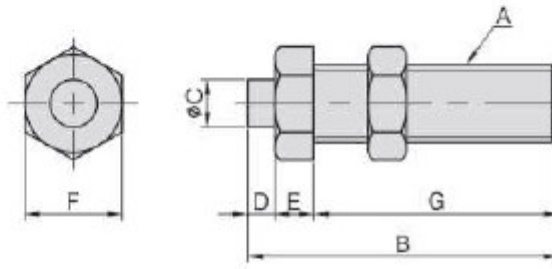
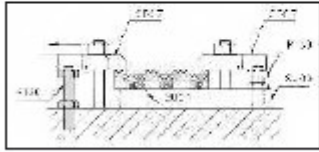


**CLAMP REST**

- Material : S45C(JIS)
- Heat treated : HRC 35°
- Surface Finish : Black Oxide.



MODEL NO.	A	B	C	D	E	F	G	kg
PT39-1219	M12	75	9,5	6	9	19	60	0,09
PT39-1624	M16	80	11,0	7	10	24	63	0,17
PT39-2030	M20	100	12,0	8	12	30	80	0,35