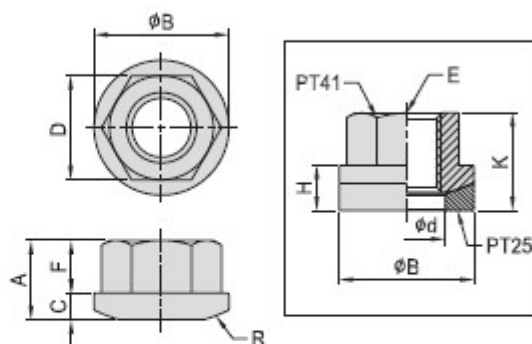


**PT41****SWIVEL FLANGE NUTS**

- Material : S45C(JIS)
- Heat treated : HRC 32°-35°
- Surface finish : Black Oxide.

MODEL NO.	A	B	C	D	d	E	F	H	K	R	kg
PT41-0813	12,0	19	3,0	13	10	M8	7,8	7	15,0	30	0,021
PT41-1017	13,0	22		17	12	M10	8,4	8	16,5		0,032
PT41-1219	14,3	26	4,0	19	15	M12	9,0	10	19,0	32	0,046
PT41-1422	17,5	28	4,5	22	16	M14	11,4	11	22,0	40	0,066
PT41-1624	20,0	32		24	19	M16	12,8		23,8		0,103
PT41-1827	20,5	35	6,0	27	20	M18	13,6	12	25,5		0,108
PT41-2030	25,0	40		30	23	M20	16,6	14	31,0	48	0,183
PT41-2232	25,4	45	6,0	32	28	M22	16,9	15	31,5	70	0,210
PT41-2436	28,0	50		36	28	M24	18,7		33,5		0,270