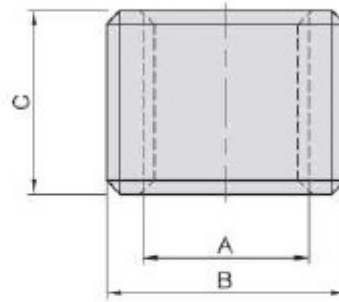


PT43**THREADED INSERT**

- Material : S45C(JIS)
- Heat treated : HRC 32°-35°
- Surface finish : Black Oxide.

MODEL NO.	A	B	C	kg
PT43-0612-10	M6x1,00	M12x1,5	10	0,005
PT43-0814-12	M8x1,25	M14x1,5	12	0,008
PT43-1016-15	M10x1,50	M16x1,5	15	0,010
PT43-1218-16	M12x1,75	M18x2,0	16	0,015
PT43-1420-18	M14x2,00	M20x2,0	18	0,300
PT43-1622-14	M16x2,00	M22x2,0	14	0,020
PT43-1622-20	M16x2,00	M22x2,0	20	0,025
PT43-2028-25	M20x2,50	M28x2,0	25	0,050