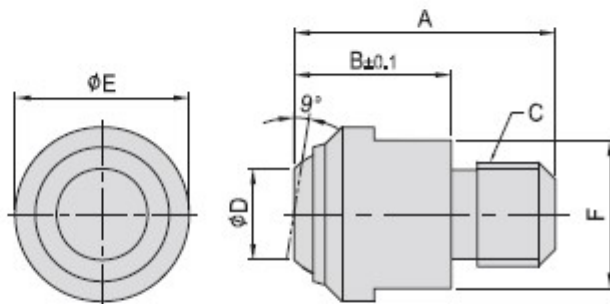


**PT50****SMOOTH BALL END BOLT**

- **Material :**  
 Bolt : S45C(JIS) / CK45(DIN)  
 Ball : SUJ2(JIS) / 100Cr6(DIN)
- **Heat treated :**  
 Bolt : HRC 28°~32°  
 Ball : HRC 62°
- **Surface finish :** Black Oxide.
- **Application :** Precision swivel ball that can be used either as a contact bolt or as a rest pad. As contact bolts, these swivel ball units are ideal for evenly distributing clamping pressure on sloped or uneven surfaces.
- **Features :** Precision ground top surface.

MODEL NO.	A	B	C	D	E	F	max (KN)	g
PT50-0613	21	13	M6x1,00	7.2	13	11	10	12
PT50-0813	21	13	M8x1,25	7.2	13	11	10	13
PT50-0816	28	18	M8x1,25	10.5	20	17	25	38
PT50-1018	28	18	M10x1,50	10.5	20	17	25	40
PT50-1218	30		M12x1,75					
PT50-1627	43	27	M16x2,00	20.0	30	27	90	150
PT50-2035	55	35	M20x2,50	34.5	50	41	165	520

\*Applies only when the minimum bore depth is kept to.