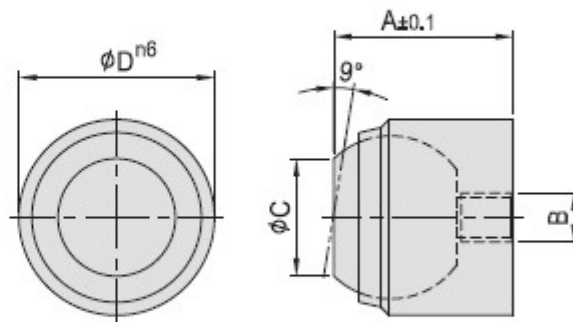


PT52**SMOOTH BALL END BOLT**

- Material :
Bolt : S45C(JIS) / CK45(DIN)
Ball : SUJ2(JIS) / 100Cr6(DIN)
- Heat treated :
Bolt : HRC 28°~32°
Ball : HRC 62°
- Surface finish : Black Oxide.
- Application : Precision swivel ball that can be used either as a contact bolt or as a rest pad. As contact bolts, these swivel ball units are ideal for evenly distributing clamping pressure on sloped or uneven surfaces.
- Features : Precision ground top surface.



MODEL NO.	A	B	C	D	WGT (KG)	g
PT52-0311	11	M3x0,5	7,2	12	10	8
PT52-0417	17	M4x0,7	10,5	18	25	30
PT52-0525	25	M5x0,8	20,0	28	90	80

*Applies only when the minimum bore depth is kept to.