

PT56

SPRING LOCATING PINS

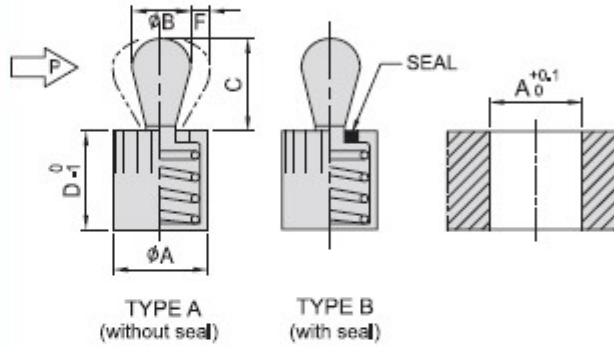


TYPE A

- Body Material : Aluminum
- Surface finish : Silver passivated
- Pin Material : POM
- Spring Material : Spring steel wire

TYPE B

- Body Material : Aluminum
- Surface finish : Silver passivated
- Pin Material : POM
- Spring Material : Spring steel wire
- Seal Material : CR



Note :

- P(N) : The MAX Strength when pin moves
- Application temperature with plastic pins up to 80°C
- See P.6-34 Installation method
- See P.6-34 Installation tool

TYPE A

MODEL NO.	A	B	C	D	F	P(N)	INSTALLATION TOOLS	g
PT56A-0603-010	6	3	4.0	7	0.5	10	PT57-0603	0.4
PT56A-1005-020	10	5	6.7	11	0.8	20	PT57-1006	1.3
PT56A-1006-040	10	6	10.7	11	1.0	40	PT57-1006	1.5
PT56A-1208-050	12	8	13.9	13	1.3	50	PT57-1208	2.9
PT56A-1610-100	16	10	16.7	17	1.6	100	PT57-1610	6.6

TYPE B

MODEL NO.	A	B	C	D	F	P(N)	INSTALLATION TOOLS	g
PT56B-0603-010	6	3	4	7	0.5	10	PT57-0603	0.4
PT56B-1005-020	10	5	6	12	0.8	20	PT57-1006	1.3
PT56B-1006-040	10	6	10	12	1.0	40	PT57-1006	1.5
PT56B-1208-050	12	8	13	14	1.3	50	PT57-1208	3.0
PT56B-1610-100	16	10	16	18	1.6	100	PT57-1610	6.7