



CHUCK

Quick Jaw-Change Chuck QB300 series

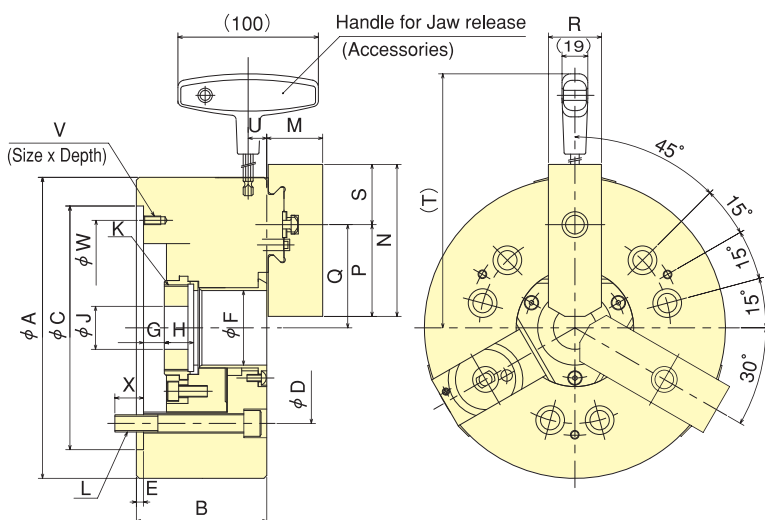
Easy set-up and Quick Change of Top Jaw

*CE correspondence
 CE Correspondence (QB300N)
 The specification is the same as that of QB300 chuck except jaw release handle.

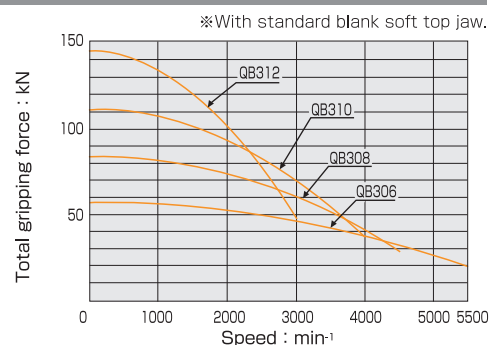


Standard Chuck

Dimensional Drawings



Gripping Characteristic Graphs



Note) Please contact our engineering regarding casting and forgin material machining.

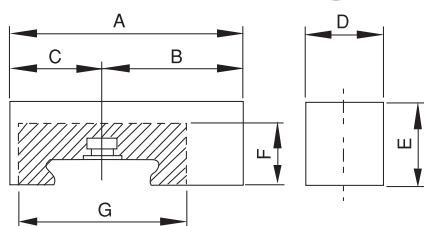
Dimensions *Blank draw nut equipped.

Dimensions Model	A	B	C (H6)	D	E	F	G max.	G min.	H	J	K max.	L	M	N	P	Q max.	Q min.	R	S	T	U	V	W	X
QB306	169	81	140	104.8	5	45	11	-1	19	20	M55x2	6-M10	31	90	54	58.5	55.75	32	36	192.5	13	M6x10	116	16
QB308	210	91	170	133.4	5	52	14.5	-1.5	20.5	30	M60x2	6-M12	39	106	64	72	68.3	37	42	220.7	13	M6x12	150	20
QB310	254	100	220	171.4	5	75	8.5	-10.5	25	45	M85x2	6-M16	43	125	76	88	83.6	42	49	242	15.5	M8x15	190	22
QB312	304	110	220	171.4	6	91	8	-15	28	50	M100x2	6-M16	51	139	90	106.3	101	42	49	267	15.5	M8x15	190	23

Specifications *Max speed is shown using actual test data.

Specifications Model	Thru-Hole mm	Outer gripping range mm	Jaw Stroke (diameter) mm	Plunger Stroke mm	Max. Draw Bar Pull Force kN (kgf)	Max. Gripping Force kN (kgf)	Max. Speed min ⁻¹	Net Weight with Soft top jaws kg	Moment of inertia kg·m ²	Matching Cylinder	Max. pressure MPa (kgf/cm ²)	Matching Soft top jaw
QB306	45	φ10~φ140	5.5	12	22 (2243)	57 (5812)	5500	12.6	0.058	S1246	2.8 (28.6)	SB06BB
QB308	52	φ18~φ180	7.4	16	34 (3467)	84 (8565)	4500	23.2	0.173	S1552	2.6 (26.5)	SB08BB
QB310	75	φ22~φ210	8.8	19	43 (4385)	111 (11319)	4000	35	0.318	S1875	2.7 (27.5)	SB10BB
QB312	91	φ30~φ250	10.6	23	55 (5608)	144 (14684)	3000	67	0.745	S2091	2.7 (27.5)	SB12BB

Soft Top Jaw Dimensional Drawings



Note) No modification is allowed in shaded area.

Dimensions for Soft Top Jaw

Soft Jaw Model Dimensions	6"		8"		10"		12"	
	SB06BB	SB06BB-040	SB08BB	SB08BB-056	SB10BB	SB10BB-060	SB12BB	SB12BB-070
A	90	90	106	106	125	125	139	139
B	54	54	64	64	76	76	90	90
C	36	36	42	42	49	49	49	49
D	32	32	37	37	42	42	42	42
E	30	40	38	56	42	60	50	70
F	24	24	28	28	31	31	34	34
G	68	68	76	76	88	88	92	92
Min. gripper range	10	10	18	18	22	22	30	30