

# YOUR SHARPENING CAPABILITIES CAN EXPAND AS YOUR SHOP GROWS

## XT-SERIES ACCESSORIES

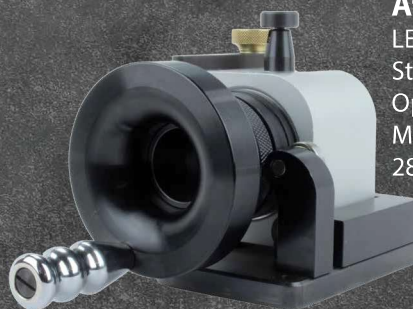


**Left-Hand Chucks**  
3-12mm  
SA16484TA  
  
12-21mm  
SA16488TA

**Large Drill Attachment**  
21-30mm  
LEX050



**Countersink Sharpening Attachment\***  
LEX150INTL  
Standard: 1 flute  
Optional: 3 & 6 flute  
Max CS Diameter: 28mm



**90° Point Attachment**  
Standard: 3-12mm  
Optional: 12-21mm  
LEX300



**Brad Point Attachment\***  
Standard: 3-12mm  
Optional: 12-21mm  
LEX200



**Step Drill Attachment\***  
Standard: 3-12mm  
Optional: 12-21mm  
LEX250



**Machine Stand**  
SA10175AF  
(all items shown  
sold separately)

**\*XY Table**  
Required with the three  
attachments above  
LEX100

