

# OK-VISE®

## Clamping Method

### TECHNICAL DATA

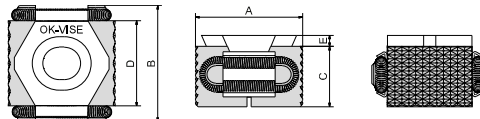
#### PAGE NUMBER:

Serrated basic version.....	<b>1</b>
Smooth basic version.....	<b>2</b>
Stainless steel model.....	<b>2</b>
Clamps with grip jaw.....	<b>3</b>
Machinable jaw model.....	<b>5</b>
Additional piece model.....	<b>6</b>
Self-adjustable model.....	<b>7</b>
Single-wedge pull-down.....	<b>8</b>
Double-wedge pull-down.....	<b>9</b>
Economy series.....	<b>10</b>



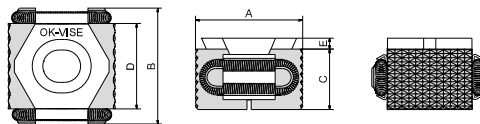
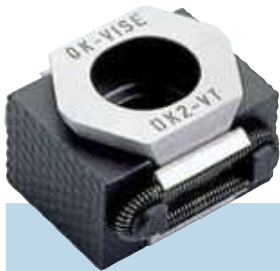
Small in Size – Giant in Performance

### SERRATED BASIC VERSION



max 2,5 tons!

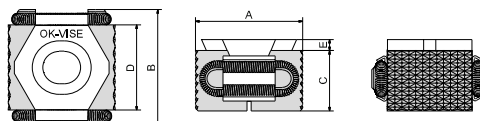
Type	A			B	C	D	E	Socket Head Screw DIN 912	Pressing force of Jaws, kN max	Tightening torque, Nm max	Weight in g approx.	Hardness of jaws HRC
	min	optimum	max									
<b>BK2-VT</b>	27	29	31	29	15	21	2.5	M8x20	25	44	55	48-52



max 6,5 tons!

DK2-VTI measures given in inches and ounces.

Type	A			B	C	D	E	Socket Head Screw DIN 912	Pressing force of Jaws, kN max	Tightening torque, Nm max	Weight in g (*oz) approx.	Hardness of jaws HRC
	min	optimum	max									
<b>DK2-VT</b>	42	45	49	41	22	30	4	M12x30	65	145	180	48-52
<b>DK2-VTI</b>	1.65	1.77	1.92	1.61	0.86	1.18	0.15	1/2-1 1/4	65	145	6.34*	48-52



max 9 tons!

Type	A			B	C	D	E	Socket Head Screw DIN 912	Pressing force of Jaws, kN max	Tightening torque, Nm max	Weight in g approx.	Hardness of jaws HRC
	min	optimum	max									
<b>FK2-VT</b>	57	61	65	56	29	42	5	M16x40	110	360	465	48-52