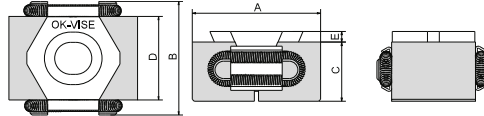
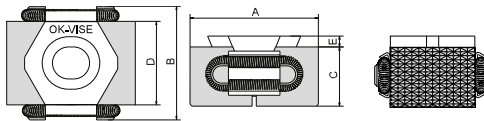


MACHINABLE JAW MODEL

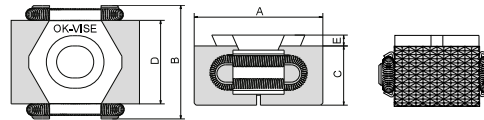
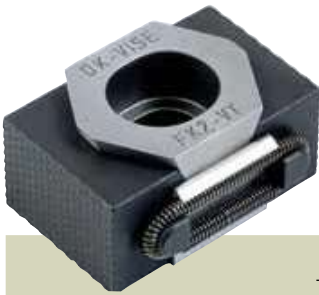


Type	A			B	C	D	E	Socket Head Screw DIN 912	Pressing force of Jaws, kN max	Tightening torque, Nm max	Weight in g approx.	Hardness of jaws HRC
	min	optimum	max									
BK2-VT+3	33	35	37	29	15	21	2.5	M8x20	25	43	70	30-34



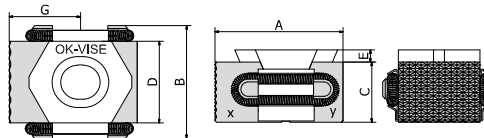
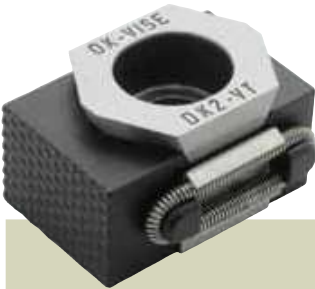
DK2-VTI+5 measures given in inches and ounces.

Type	A			B	C	D	E	Socket Head Screw DIN 912	Pressing force of Jaws, kN max	Tightening torque, Nm max	Weight in g (*oz) approx.	Hardness of jaws HRC
	min	optimum	max									
DK2-VT+5	52	55	59	41	22	30	4	M12x30	55	145	235	30-34
DK2-VTI+5	2.04	2.16	2.32	1.61	0.86	1.18	0.15	1/2-1 1/4	55	145	8.28*	30-34



Type	A			B	C	D	E	Socket Head Screw DIN 912	Pressing force of Jaws, kN max	Tightening torque, Nm max	Weight in g approx.	Hardness of jaws HRC
	min	optimum	max									
FK2-VT+5	67	70	75	56	29	42	5	M16x40	100	360	550	30-34

Combo model: MACHINABLE & SMOOTH JAW



DK2-VTI+5S measures given in inches and ounces.

Type	G min	G opt	G max
BK2-VT+3S	16.5	17.5	18.5
DK2-VT+5S	26	27.5	29.5
DK2-VTI+5S	1.00	1.08	1.16
FK2-VT+5S	33.5	35	37.5

Type	A			B	C	D	E	Socket Head Screw DIN 912	Pressing force of Jaws, kN max	Tightening torque, Nm max	Weight in g (*oz) approx.	Hardness of jaws HRC X	Hardness of jaws HRC Y
	min	optimum	max										
BK2-VT+3S	30	32	34	29	15	21	2.5	M8x20	22	43	65	30-34	48-52
DK2-VT+5S	47	50	54	41	22	30	4	M12x30	55	145	210	30-34	48-52
DK2-VTI+5S	1.85	1.97	2.12	1.61	0.86	1.18	0.15	1/2-1 1/4	55	145	210*	30-34	48-52
FK2-VT+5S	62	65	70	56	29	42	5	M16x40	100	360	500	30-34	48-52